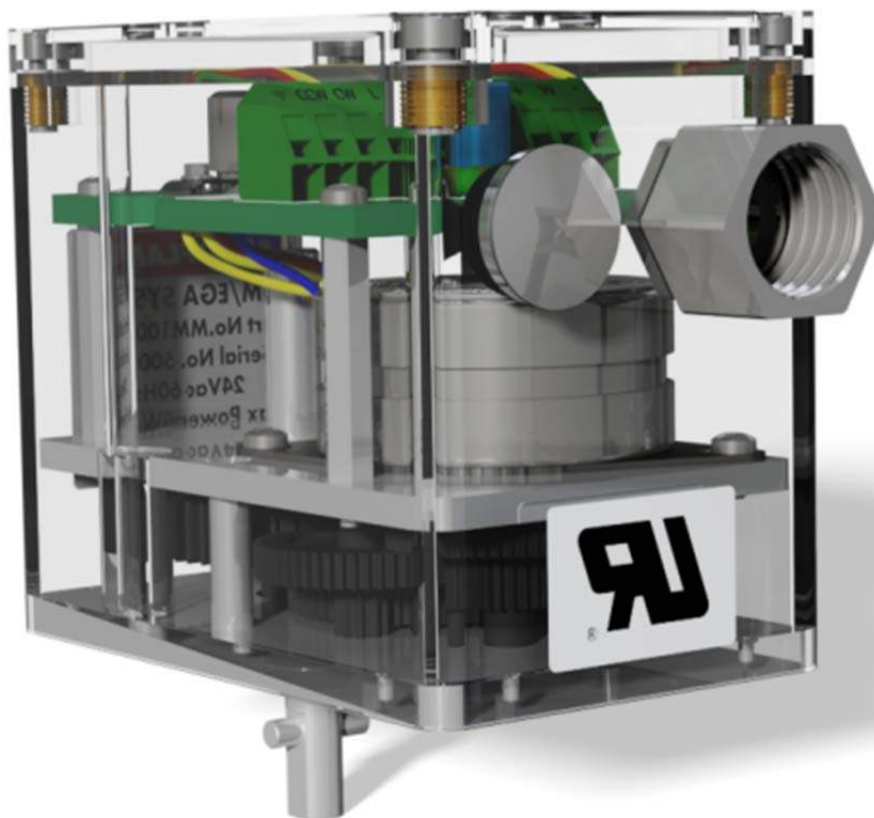
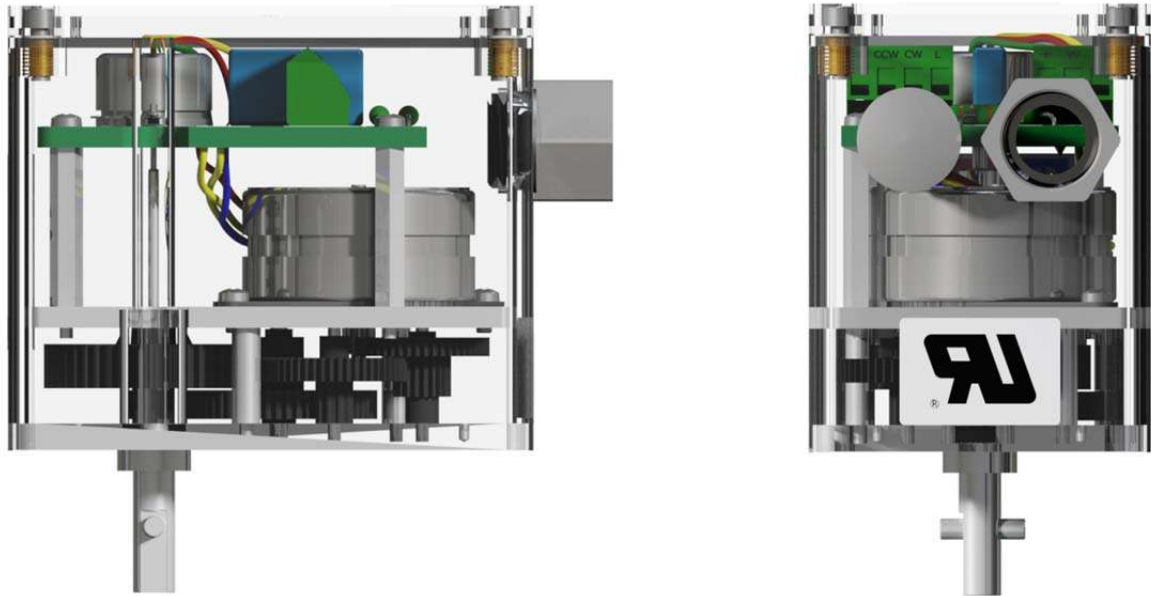


2 SERVOMOTORS

2.1 Small Servomotor

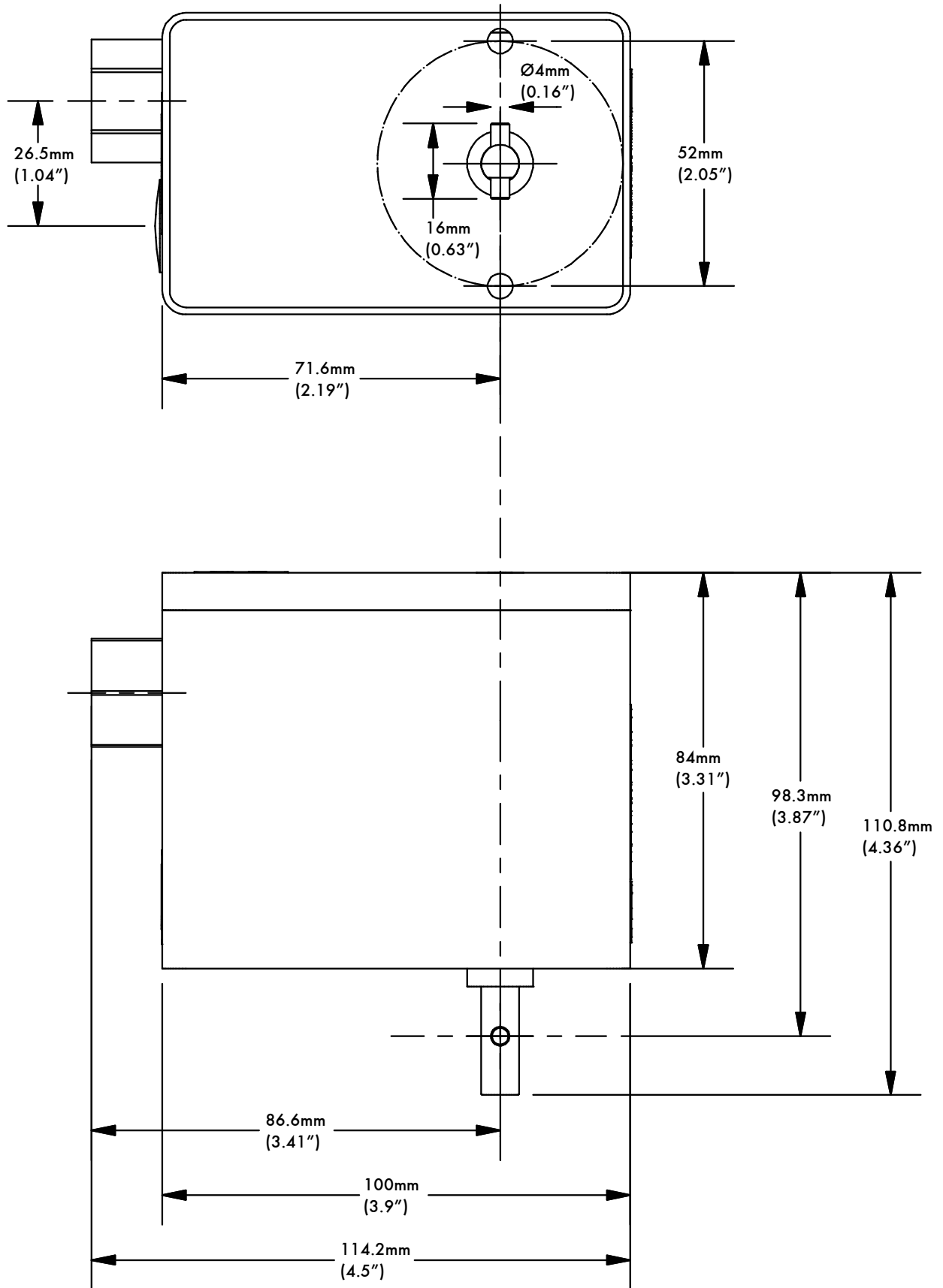
All small servomotors are supplied with PG11 cable glands, except for 24V small servomotors which are supplied with 1/2" NPSM adaptor.



Drawing No. 9020

2 Servomotors

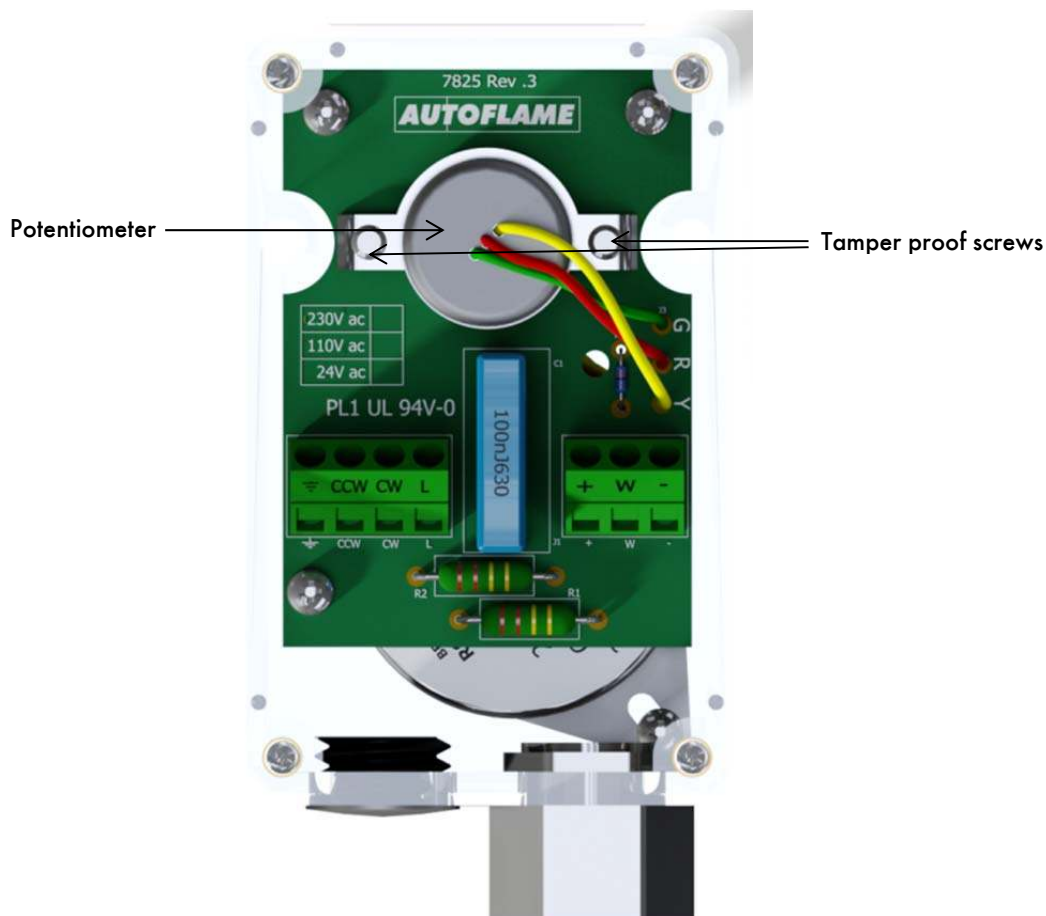
Small Servomotor - Dimensions



2 Servomotors

Servomotors must only be installed and adjusted by an Autoflame certified technical engineer.

To adjust the potentiometer, loosen the tamper proof screws using a tamper proof screwdriver available from Autoflame. Use fingers only to adjust the position of the potentiometer. After adjustment, ensure tightness, do not over tighten. Do not raise the potentiometer from the PCB.



Specification	
Supply voltage	24V/ 230V/ 110V, 50Hz/60Hz
Output shaft torque	4Nm (3ft lbs)
Operating angle	0 - 90°
Max rated power	3W
Ambient temperature	0°C to 60°C (32°F to 140°F)
Industrial protection rating	IP54, NEMA13
Mounting angle	360°
Positioning	M.M. Drive
Drive motor	Synchronous
Body material	High impact acrylonitrile butadiene styrene (ABS)
Gear material	Polyoxymethylene
Weight	0.57kg
Dimension	100 x 84 x 65.5mm
Wiring connection (230V)	PG11 gland
Wiring connection (24V)	½" conduit aaptot (blanking plug)
Lid screws	4 x M4x10 Stainless steel socket head
Lid screw torque	0.2 0 0.4 Nm
Body mounting screws	2 x M5x25 Stainless socket head
Body mounting torque	1.2 - 2.6 Nm