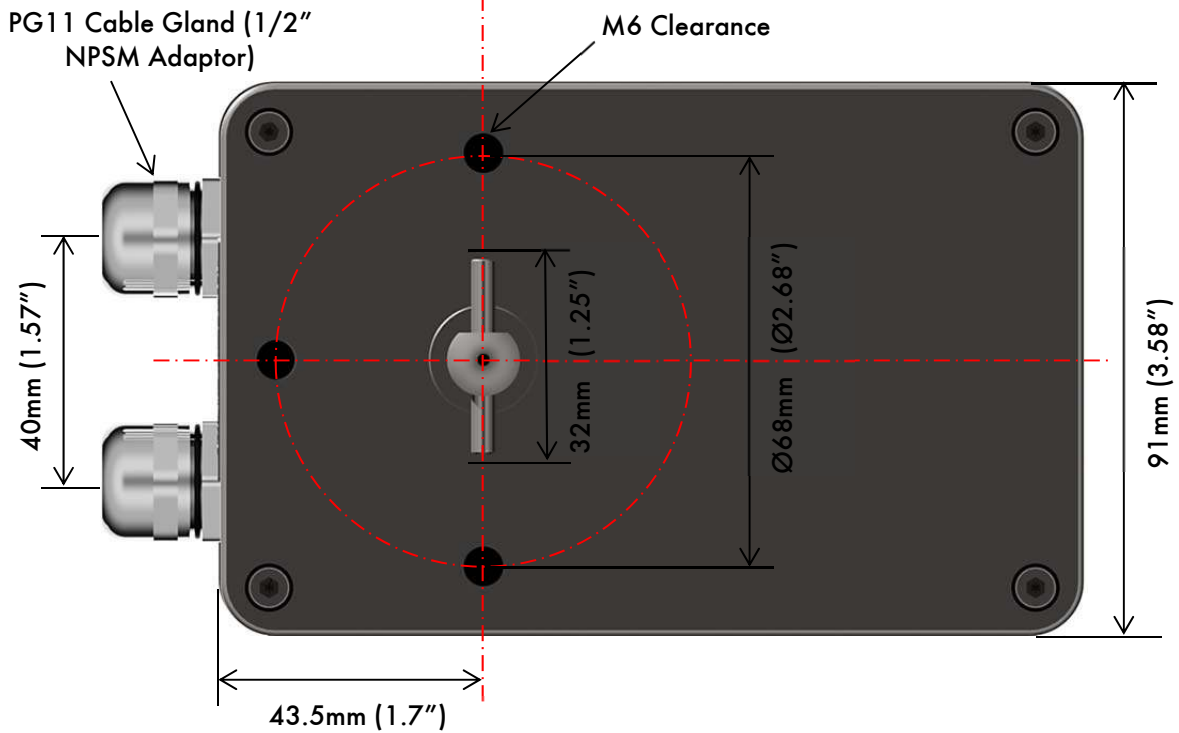
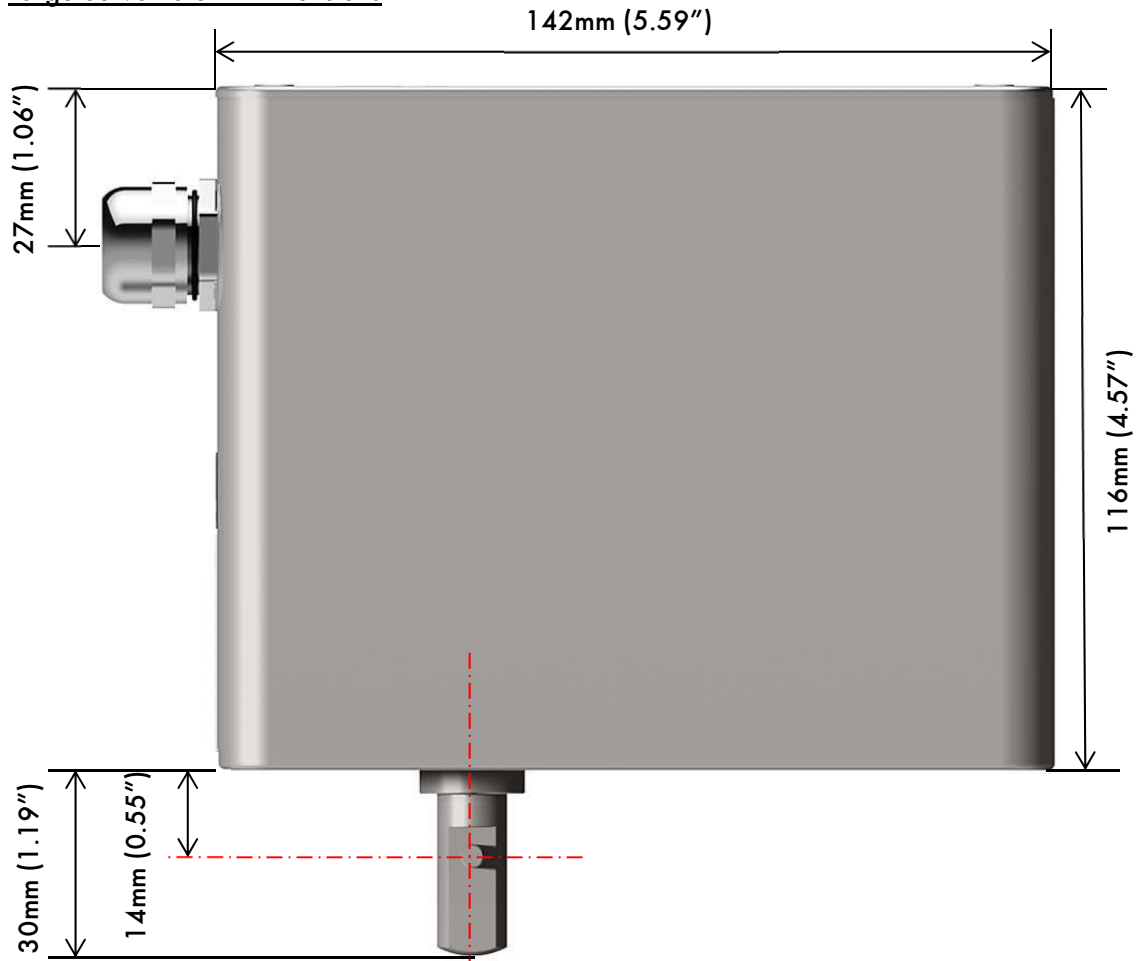


2.2 Large Servomotor



2 Servomotors

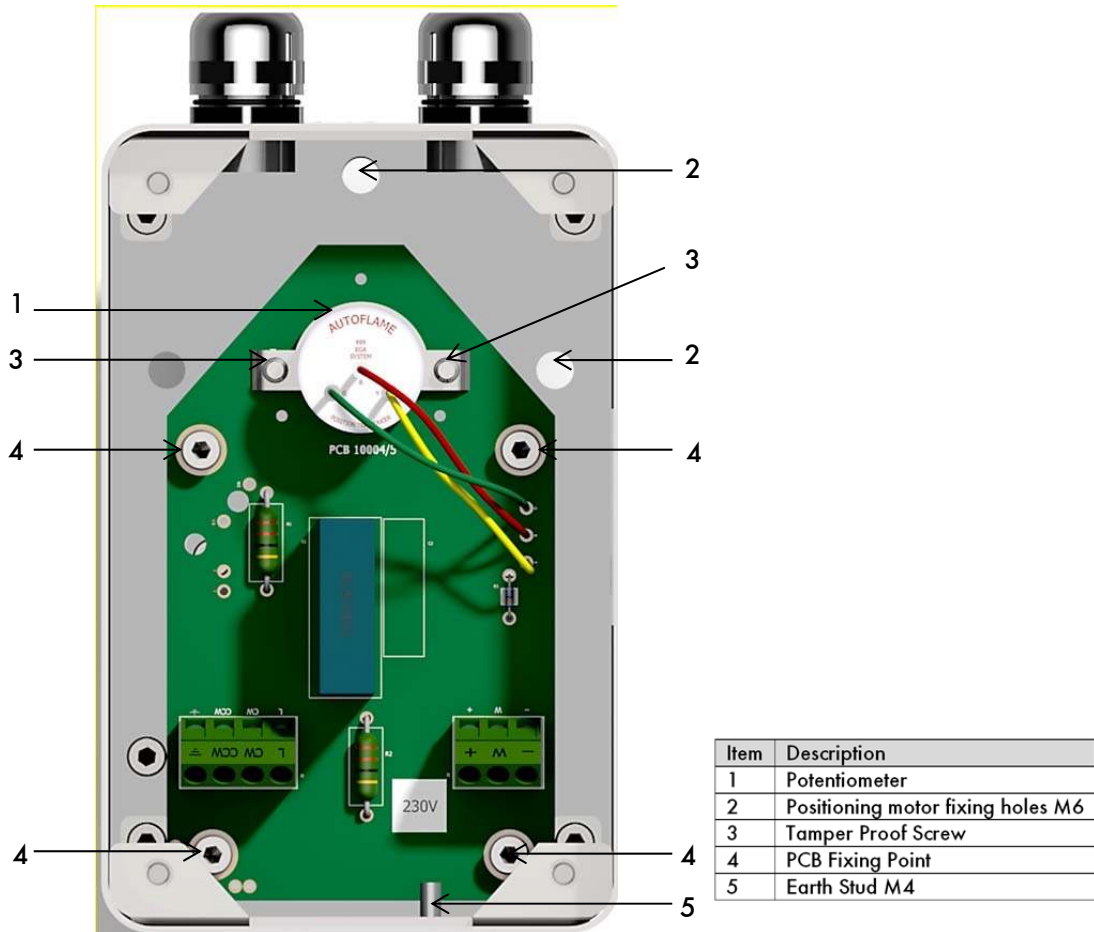
Large Servomotor - Dimensions



2 Servomotors

Note: Servomotors must only be installed and adjusted by an Autoflame certified technical engineer.

To adjust the potentiometer, loosen the tamper proof screws using a tamper proof screwdriver available from Autoflame. Use fingers only to adjust the position of the potentiometer. After adjustment, ensure tightness, do not over tighten. Do not raise the potentiometer from the PCB.



Specification	
Supply Voltage	24/230V, 50/60Hz
Output Shaft Torque	25Nm/18ft lbs
Operating Angle	0-90°
Operating Time	Nominal 30 seconds
Max Power Rated	9W
Ambient Temperature	0°C to 60°C/32°F to 140°F
Industrial Protection Rating	IP54/NEMA 13
Mounting Angle	360°
Positioning	MM Drive
Drive Motor	Synchronous
Body Material	Mild Steel CR4
Coating	Interpon 700 Powder Coat
Weight	1.85kg
Dimensions	142x116x91mm
Wiring Connection (230V)	PG11 Gland
Wiring Connection (24V)	½" Conduit adaptor/ blanking plug