

# Autoflame

**Product Catalogue**  
产品目录

**AUTOFLAME**





# Product Catalogue

## 产品目录



Issued by 发布公司:

**AUTOFLAME ENGINEERING LTD**

**AUTOFLAME 工程有限公司**

**Unit 1-2, Concorde Business Centre**

**Airport Industrial Estate, Wireless Road**

**Biggin Hill, Kent TN16 3YN**

**Tel 电话: +44 (0)845 872 2000**

**Fax 传真: +44 (0)845 872 2010**

**Email 电子邮件: [salesinfo@autoflame.com](mailto:salesinfo@autoflame.com)**

**Website 网站: [www.autoflame.com](http://www.autoflame.com)**

**Registered Holder 注册所有人:**

**Company 公司:**

**Department 部门:**

**This manual and all the information contained herein is copyright of Autoflame Engineering Ltd. It may not be copied in the whole or part without the consent of the Managing Director.**

**Autoflame 工程有限公司拥有本手册的所有版权。在未经Autoflame公司常务董事同意的情况下，本手册内容不得被整体或部分引用。**

**Autoflame Engineering Ltd's policy is one of continuous improvement in both design and manufacture. We therefore reserve the right to amend specifications and/or data without prior notice. All details contained in this manual are correct at the time of going to print.**

**Autoflame 工程有限公司致力于不断提升 Autoflame 产品的设计和制造，我们保留修订本手册规范/数据的权利，恕不另行通知。本手册内容于印刷时准确无误。**

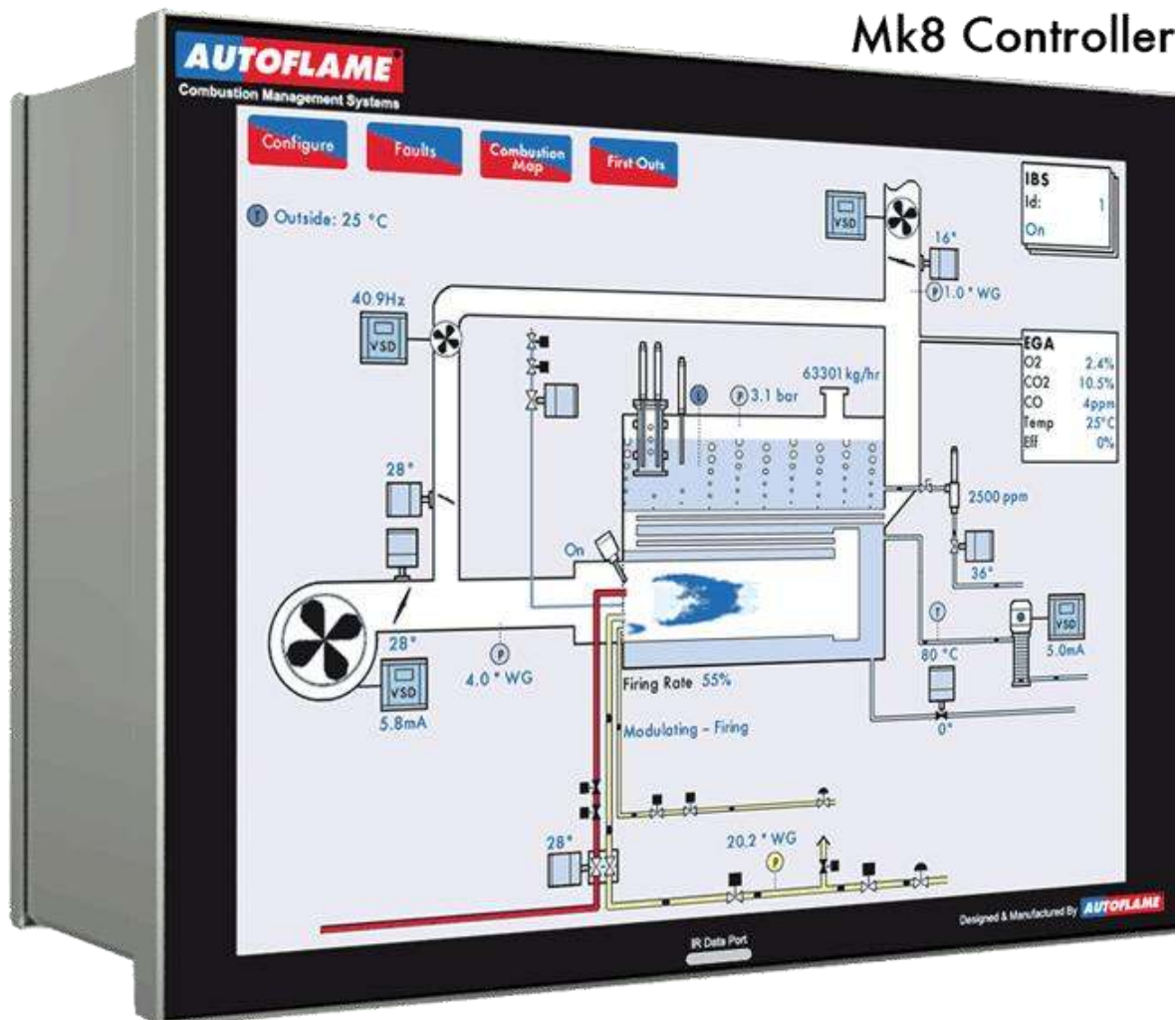
## Contents 目录

1	M.M. Control Modules & Parts 微型控制模块和零件 .....	4
1.1	M.M. MK8 Control Modules 微型控制模块 .....	4
1.2	Flame Scanners 火焰扫描仪 .....	7
1.3	Air/Gas/Oil Sensors 空气/气体/燃油传感器 .....	10
1.4	Boiler Load Detectors – Temperatures 锅炉负荷检测器-温度 .....	12
1.5	Boiler Load Detectors – Pressures 锅炉负荷检测器-压力 .....	14
1.6	Outside Temperature Control 室外温度控制 .....	15
1.7	Servo Motors 伺服电机 .....	16
1.8	Oil Control Valves 燃油控制阀 .....	18
1.9	Gas Control Butterfly Valves (Threaded) 燃气控制蝶阀 (带螺纹) .....	20
1.10	Gas Control Butterfly Valves (Flanged 30mm) 燃气控制蝶阀 (法兰 30mm) .....	21
2	E.G.A. Modules & Parts 烟气分析仪模块和零件 .....	23
2.1	E.G.A. EVO Components EGA 烟气分析仪组件 .....	23
3	D.T.I. Modules & Parts 数据传输接口模块和零件 .....	27
3.1	Remote Monitoring and Control 远程监控 .....	27
3.2	PC Software and Accessories PC 软件和附件 .....	28
4	Water Level Control 水位控制 .....	29
4.1	Water Level Control Equipment 水位控制设备 .....	29
4.2	Steam Boiler Capacitance Probes 蒸汽锅炉电容探头 .....	30
4.3	2nd Low Probe 2 级低探头 .....	31
4.4	Total Dissolved Solids Equipment 总溶解固体设备 .....	31
4.5	Feed Water Valves 给水阀 .....	32
4.6	Bottom Blowdown 底部排污 .....	33
5	Peripheral & Spare Parts 周边及备件 .....	34
5.1	End Switch Proving 终端开关校验 .....	34
5.2	End Switch Proving – Modified Oil Valves 终端开关校验-改良油阀 .....	34
5.3	End Switch Proving Gas Control Butterfly Valves 终端开关校验-燃气控制蝶阀 .....	35
5.4	Flue Gas Recirculation (FGR) Valves 废气再循环阀 .....	36
5.5	Hazardous Environment/ Explosion Proof Equipment ATEX 危险环境/防爆设备 .....	37
5.6	Factory Built Single Fuel UL Control Panel 工厂造单燃料 UL 控制面板 .....	38
5.7	Factory Built Dual Fuel UL Control Panel 工厂造双燃料 UL 控制面板 .....	39
5.8	CB Control Panel Retrofit CB 改良控制面板 .....	40
5.9	Mini Mk8 M.M. Control Panel Mk8 微型控制模块控制面板 .....	41

## 1 M.M. Control Modules & Parts 1 微型控制模块和零件

5.10	Danfoss Variable Speed Drives – Panel Mounted_Danfoss 变速驱动器-安装面板 .....	42
5.11	Danfoss Variable Speed Drives – Stand Alone_Danfoss 变速驱动器-单机 .....	43
5.12	Direct Online Motor Starter 直接在线电机起动器 .....	44
5.13	Direct Online Motor Starter 直接在线电机起动器 .....	44
5.14	VSD Bypass Switch – Single Fuel 变频驱动旁路开关-单燃料.....	45
5.15	VSD Bypass Switch – Dual Fuel 变频驱动旁路开关-双燃料.....	45
5.16	M.M. System Spares 微型模块系统备件 .....	46
5.17	Mk8 E.G.A. System Spares MK8 尾气分析仪系统备件 .....	47
5.18	Mk7 E.G.A. System Spares MK7 尾气分析仪系统备件.....	48
5.19	Mk6 E.G.A. System Spares MK6 尾气分析仪系统备件.....	49
5.20	O2 Interface Modules O2 接口模块.....	49
5.21	D.T.I. System Spares 数据传输接口系统备件 .....	49
5.22	Sundries and Spare Parts 杂项和备件.....	50
5.23	Servo Motor Spares 伺服电机备件.....	50
5.24	Oil Valve Spares 油阀备件.....	51
5.25	Water Level Spares 水位备件.....	51
5.26	CB Gears Drive Assembly CB 齿轮传动装置 .....	52
5.27	Cables 电缆 .....	52
5.28	Relays 继电器 .....	52
5.29	Demo/Test Equipment 演示/测试设备.....	53
5.30	Engineering Services 工程服务 .....	53
5.31	Technical Manual & Product Catalogue 技术手册和产品目录.....	54
6	Repairs 维修.....	54
6.1	Standard Repair Prices 标准维修价格 .....	54

# 1 M.M. Control Modules & Parts 微型控制模块和零件



## 1.1 M.M. MK8 Control Modules 微型控制模块

*Mk8 M.M.*

### Mk8 M.M. Electrical Specifications

#### Mk8 微型控制模块电气规范

Classification According to EN298

根据 EN298 分类

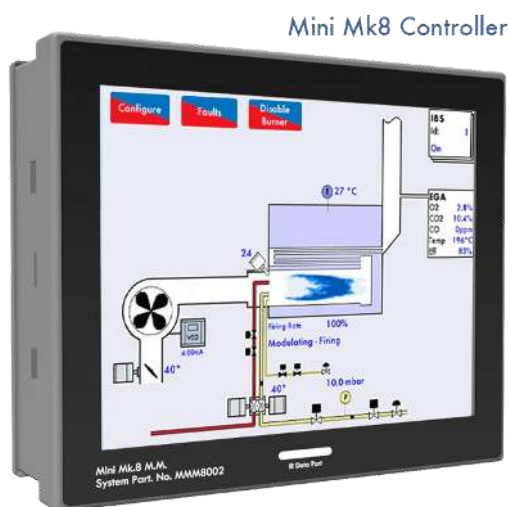
Mains Supply:	230V, +10%/-15%	47 – 63 Hz, Unit max. power consumption 62W
主电源	120V, +10%/-15%	47 – 63 Hz, 单位最大耗电量 62W

Max Leakage: 3.5mA  
最大漏电流

## 1 M.M. Control Modules & Parts 1 微型控制模块和零件

Climate: 气候	Temperature 气温	0 to +40°C (32 to 104°F) 0 至 +40°C (32 至 104°F)
Humidity 湿度	0 to 90% non-condensing 0 至 90%不凝结	
Storage: 储存	Temperature 气温	-20 to 85°C (-4 to 185°F) -20 至 85°C (-4 至 185°F)
Protection Rating: 防护等级	The unit is designed to be panel mounted in any orientation and the front facia is IP65, NEMA4. The back of the unit is IP20, NEMA1. 控制模块的设计安装朝向是任意方向，控制模块的前部仪表板防护等级为 IP65，NEMA4. 控制模块背部的防护等级是 IP20，NEMA1。	

Item No. 项目号	M.M. Control Modules 微型控制模块	Kgs	Part No. 零件号
1	Mk8 M.M. Evolution Module Mk8 微型控制 Evolution 模块 7 Channel with flame safeguard control, 12.1" full colour touch screen 7 通道带火焰防护控制，12.1" 全彩色触摸屏	3.50	MM70001/E
<p><i>Mk8 voltage is universal (230V/110V)</i> Mk8 电压为通用(230V/110V)</p>			



**Mini Mk8 M.M.**  
**Mini Mk8 微型控制模块**

### Mini Mk8 M.M. Electrical Specifications Mini Mk8 微型控制模块电气规范

Classification According to EN298  
根据 EN298 分类。

Mains Supply:	230V, +10%/-15% 120V, +10%/-15%	47-63 Hz, unit max. consumption 140W 47-63 Hz, 单位最大耗电量 140W
---------------	------------------------------------	--

主电源		
Climate 气候:	Min. Temperature 最低温度	0°C (32°F)

1 M.M. Control Modules & Parts 1 微型控制模块和零件

Recommended Temperature 建议温度	Less than 40°C (104°F) 低于 40°C (104°F)
Max. Temperature 最高温度	60°C (140°F)
Humidity 湿度	0 to 90% non-condensing 0 至 90%不凝结

Storage: 储存	Temperature 温度	-20 to 85°C (-4 to 185°F) -20 至 85°C (-4 至 185°F)
----------------	-------------------	--

Protection Rating:  
防护等级

The unit is designed to be panel mounted in any orientation and the front facia is IP65, NEMA4. The back of the unit is IP20, NEMA1.  
防护等级 控制模块的设计安装朝向是任意方向，控制模块的前部仪表板防护等级为 IP65, NEMA4.. 控制模块背部的防护等级是 IP20, NEMA1。

Item No. 项目号	M.M. Control Modules 微型控制模块	Kgs	Part No. 零件号
3	Mini Mk8 Evolution Module Mk8 微型 Evolution 模块 4 Channel with flame safeguard, 7" full colour touch screen 4 通道带火焰防护，7" 全彩色触摸屏	2.50	MMM8002
	Mini Mk8 M.M. voltage is universal (230/110 v) Mk8 微型控制模块电压为通用电压		



**1.2 Flame Scanners**  
火焰扫描仪



*IR Self Check Scanner*  
红外自检测扫描仪

Item No .	Flame Scanners	Kgs	Part No.
项目号	火焰扫描仪		零件号
4	IR Self Check Scanner 红外自扫描扫描仪 <i>For use with Mk7 M.M. and Mini k8 M.M.</i> 用于 Mk7 和 Mk8 微型控制模块	0.20	MM70017



*Self-Check UV Scanner, High Sensitivity, End View*  
自检测紫外扫描仪，高灵敏度，端视图



*Self-Check UV Scanner, High Sensitivity, Side View*  
自检测紫外扫描仪，高灵敏度，侧视图

Item No.	Flame Scanners	Kgs	Part No.
项目号	火焰扫描仪		零件号
5	Self Check UV Scanner, High Sensitivity 自检测紫外扫描仪，高灵敏度 <i>End view only, 1" connection</i> 端视图，1"连接	0.80	MM60003/HS
6	Self Check UV Scanner, High Sensitivity 自检测紫外扫描仪，高灵敏度 <i>Side view only</i> 侧视图	0.85	MM60003/HS/SV



Standard UV Scanner, Side View  
标准紫外扫描仪, 侧视图



Standard UV Scanner, End View  
标准紫外扫描仪, 端视图



Standard UV Scanner, High Sensitivity, End View  
标准紫外扫描仪, 高灵敏度, 端视图



Swivel Mount Assembly, 1" connection  
旋转安装总成, 1"连接

Item No. 项目号	Flame Scanners 火焰扫描仪	Kgs	Part No. 零件号
7	Standard UV Scanner 标准紫外扫描仪 Side view only, complete with clip and plate connection 侧视图, 带卡圈和板连接	0.20	MM60004
8	Standard UV Scanner 标准紫外扫描仪 End view only, 1/2" connection 端视图, 1/2"连接	0.20	MM60004/U
9	Standard UV Scanner, High Sensitivity 标准紫外扫描仪, 高灵敏度 End view only, 1/2" connection 端视图, 1/2"连接	0.20	MM60004/HSU
10	Swivel Mount Assembly, 1" connection 旋转安装总成, 1"连接 Mounting adaptor for optimum positioning of UV scanner 安装适配器, 用于紫外扫描仪最佳定位	1.50	UVM60003
11	Swivel Mount Assembly, 1/2" connection 旋转安装总成, 1/2"连接 Mounting adaptor for optimum positioning of UV scanner 安装适配器, 用于紫外扫描仪最佳定位	1.50	UVM60004

## 1.3 Air/Gas/Oil Sensors

## 空气/气体/燃油传感器



*Air Pressure Sensor*  
空气压力传感器

Item No. 项目号	Mk8 Air & Gas Sensors Mk8 空气和气体传感器	Kgs	Part No. 零件号
12	Air Pressure Sensor 空气压力传感器 0 to 65mBar, 0 to 25"wg, 0 to 1 PSI 0 至 65mBar, 0 至 25"wg, 0 至 1 PSI	0.42	MM80005
13	Air Pressure Sensor 空气压力传感器 0 to 130mBar, 0 to 50"wg, 0 to 2 PSI 0 至 130mBar, 0 至 50"wg, 0 至 2 PSI	0.42	MM80013
14	Gas Pressure Sensor 燃气压力传感器 12.5 to 65mBar, 5 to 25"wg, 0.18 to 1PSI 12.5 至 65mBar, 5 至 25"wg, 0.18 至 1PSI	0.42	MM80006
15	Gas Pressure Sensor 燃气压力传感器 52 to 340mBar, 25 to 135"wg, 0.75 to 5 PSI 52 至 340mBar, 25 至 135"wg, 0.75 至 5 PSI	0.42	MM80008
16	Gas Pressure Sensor 燃气压力传感器 115 to 750mBar, 50 to 300"wg, 1.8 to 11 PSI 115 至 750mBar, 50 至 300"wg, 1.8 至 11 PSI	0.42	MM80011
17	Gas Pressure Sensor 燃气压力传感器 207 to 1380mBar, 83 to 550"wg, 3 to 20 PSI 207 至 1380mBar, 83 至 550"wg, 3 至 20 PSI	0.42	MM80012
<p><i>Mk8 Air &amp; Gas Sensors are suitable for usage with Mk8, Mk7 and Mk6 modules</i> Mk8 空气和气体传感器用于 Mk8, Mk7 和 Mk6 模块</p>			



Oil Pressure Sensor 燃油压力传感器

Item No. 项目号	Oil Sensor 燃油传感器	Kgs	Part No. 零件号
18	Oil Pressure Sensor 燃油压力传感器 0 to 40 Bar, 0 to 600 PSI 0 至 40 Bar, 0 至 600 PSI	0.42	MM60009

**1.4 Boiler Load Detectors – Temperatures 锅炉负荷检测器-温度**



*Temperature Detector*  
温度检测器

Item No. 项目号	Boiler Load Detectors – Temperature 锅炉负荷检测器 – 温度	Kgs	Part No. 零件号
19	Temp. Detector, 100mm length 温度检测器, 100mm 长 0-400°C, 0-752°F	0.45	MM10006/100
20	Temp. Detector, 150mm length 温度检测器, 150mm 长 0-400°C, 0-752°F	0.45	MM10006/150
21	Temp. Detector, 200mm length 温度检测器, 200mm 长 0-400°C, 0-752°F	0.45	MM10006/200
22	Temp. Detector, 250mm length 温度检测器, 250mm 长 0-400°C, 0-752°F	0.45	MM10006/250
23	Temp. Detector, 400mm length 温度检测器, 400mm 长 0-400°C, 0-752°F	0.45	MM10006/400
24	Temp. Detector, 4" length 温度检测器, 4"长 <i>With a ½" electrical conduit adaptor. 0-400°C, 0-752°F</i> 带一个½" 电气导管接头, 0-400°C, 0-752°F	0.45	MM10006/100U
25	Temp. Detector, 6" length 温度检测器, 6"长 <i>With a ½" electrical conduit adaptor. 0-400°C, 0-752°F</i> 带一个½" 电气导管接头, 0-400°C, 0-752°F	0.45	MM10006/150U
26	Temp. Detector, 8" length 温度检测器, 8"长 <i>With a ½" electrical conduit adaptor. 0-400°C, 0-752°F</i> 带一个½" 电气导管接头, 0-400°C, 0-752°F	0.45	MM10006/200U
27	Temp. Detector, 10" length 温度检测器, 10"长 <i>With a ½" electrical conduit adaptor. 0-400°C, 0-752°F</i> 带一个½" 电气导管接头, 0-400°C, 0-752°F	0.45	MM10006/250U
28	Temp. Detector 15" length 温度检测器, 15"长 <i>With a ½" electrical conduit adaptor. 0-400°C, 0-752°F</i> 带一个½" 电气导管接头, 0-400°C, 0-752°F	0.45	MM10006/400U

## 1.5 Boiler Load Detectors – Pressures 锅炉负荷检测器-压力



Pressure Detector  
压力检测器

Item No. 项目号	Boiler Load Detectors – Temperature 锅炉压力检测器-温度	Kgs	Part No. 零件号
29	Pressure Detector 压力检测器 2-23Bar	0.21	MM10008
30	Pressure Detector 压力检测器 2-38Bar	0.21	MM10009
31	Pressure Detector 压力检测器 0.2-3.8Bar	0.21	MM10010
32	Pressure Detector 压力检测器 0-100Bar	0.21	MM10017
33	Pressure Detector 压力检测器 30-330PSI	0.21	MM10008/U
34	Pressure Detector 压力检测器 50-550PSI	0.21	MM10009/U
35	Pressure Detector 压力检测器 1.5-55.0PSI	0.21	MM10010/U
36	Pressure Detector 压力检测器 0-1450PSI	0.21	MM10017/U
37	Lead for Pressure Detector 压力检测器负荷	0.10	LEAD10001
<p><i>Pressure detectors are supplied with a plug fitted and are not supplied with a lead. This is a separate part number LEAD10001.</i> 压力检测器提供一个匹配的插塞，但不提供导线，导线的单独零件号为 LEAD10001</p>			



## 1.6 Outside Temperature Control 室外温度控制



Outside Temperature Sensor  
室外温度传感器



Outside Temperature Module  
室外温度模块

Item No. 项目号	Outside Temperature Control 室外温度控制	Kgs	Part No. 零件号
38	Outside Temperature Sensor 室外温度传感器 -40 to +40°C/ -40 to +104°F -40 至 +40°C/ -40 至 +104°F	0.32	MM60007
39	Mk6 Outside Temperature Module Mk6 室外温度模块 For use with Mk6 D.T.I. (DTI60100) 与 Mk6 D.T.I. (DTI60100)搭配使用	1.00	MM60015
40	Mk7 Outside Temperature Module Mk7 室外温度模块 For use with Mk7 D.T.I. (DTI70100) 与 Mk7 D.T.I. (DTI70100)搭配使用	1.00	MM70015

## 1.7 Servo Motors 伺服电机



Small Servomotor 小型伺服电机



Large Servomotor  
大型伺服电机

Item No. 项目号	Servo Motors 伺服电机	Kgs	Part No. 零件号
41	Small Servo Motor, 230V 50Hz 小型伺服电机 4Nm, 3ft lbs	0.55	MM10005
42	Small Servo Motor, 110V 60Hz 小型伺服电机 4Nm, 3ft lbs *Please contact Autoflame for availability 请联系 Autoflame 是否有该产品	0.55	MM10005/A
43	Small Servo Motor, 24V 50Hz 小型伺服电机 4Nm, 3ft lbs	0.55	MM10005/C
44	Small Servo Motor, 24V 60Hz 小型伺服电机 4Nm, 3ft lbs	0.55	MM10005/D
45	Small Servo Motor, 110V 50Hz 小型伺服电机 4Nm, 3ft lbs *Please contact Autoflame for availability 请联系 Autoflame 是否有该产品	0.55	MM10005/E
46	Large Servo Motor, 230V 50/60Hz 大型伺服电机 25Nm, 18ft lbs	1.85	MM10004
47	Large Servo Motor, 110V 50/60Hz 大型伺服电机 25Nm, 18ft lbs *Please contact Autoflame for availability 请联系 Autoflame 是否有该产品	1.85	MM10004/A
48	Large Servo Motor, 24V 50/60Hz 大型伺服电机 25Nm, 18ft lbs	1.85	MM10004/D



Industrial Servo Motor  
工业 伺服电机

Item No. 项目号	Servo Motors 伺服电机	Kgs	Part No. 零件号
49	Industrial Servo Motor 05, 230V 50/60Hz 工业伺服电机 40Nm, 37ft lbs (for feed water control only) (仅用于给水控制)	4.00	MM10070
50	Industrial Servo Motor 05, 110V 50/60Hz 工业伺服电机 40Nm, 37ft lbs (for feed water control only) (仅用于给水控制)	4.00	MM10070/110
51	Industrial Servo Motor 10, 230V 50/60 Hz 工业伺服电机 98Nm, 72ft lbs	6.00	MM10072
52	Industrial Servo Motor 10, 110V 50/60Hz 工业伺服电机 98Nm, 72ft lbs	6.00	MM10072/110
53	Industrial Servo Motor 20, 230V 50/60Hz 工业伺服电机 200Nm, 148ft lbs	6.00	MM10074/B
54	Industrial Servo Motor 20, 120V 50/60Hz 工业伺服电机 200Nm, 148ft lbs	6.00	MM10074/B/110
55	Industrial Servo Motor 40, 230V 50/60Hz 工业伺服电机 400Nm, 295ft lbs – to be used with Solid State Relays 与固态继电器搭配使用	8.00	MM10078
56	Industrial Servo Motor 40, 110V 50/60Hz 工业伺服电机 400Nm, 295ft lbs – to be used with Solid State Relays 与固态继电器搭配使用	8.00	MM10078/110
57	Industrial Servo Motor 10, 230V (4-20mA) 50/60Hz 工业伺服电机 98Nm, 148ft lbs (for use with M.M. VSD channels) 与微型模块变速驱动通道搭配使用	6.00	MM10073
58	Industrial Servo Motor 20, 230V (4-20mA) 50/60Hz 工业伺服电机 200Nm, 148ft lbs (for use with M.M. VSD channels) 与微型模块变速驱动通道搭配使用	6.00	MM10079
59	Industrial Servo Motor 40, 230V (4-20mA) 50/60Hz 工业伺服电机 400Nm, 205ft lbs (for use with M.M. VSD channels) 与微型模块变速驱动通道搭配使用	8.00	MM10080
60	Industrial Servo Motor 10, 110V (4-20mA) 50/60Hz 工业伺服电机 98Nm, 148ft lbs (for use with M.M. VSD channels) 与微型模块变速驱动通道搭配使用	6.00	MM10073/110
61	Industrial Servo Motor 40, 230V (4-20mA) 50/60Hz 工业伺服电机 200Nm, 148ft lbs (for use with the Mk7 on channel 5/6) 与通道 5/6 中的 Mk7 搭配使用	6.00	MM10079/110
62	Industrial Servo Motor 40, 110V (4-20mA) 50/60Hz 工业伺服电机 400Nm, 205ft lbs (for use with the Mk7 on channel 5/6) 与通道 5/6 中的 Mk7 搭配使用	8.00	MM10080/110
Please note voltage and frequency (Hz). 请注明电压和频率(Hz). Servo motors are not supplied as standard with mounting kits, only mounting screws are supplied. 伺服电机不提供标准的安装包, 仅提供安装螺丝。			

## 1.8 Oil Control Valves 燃油控制阀



*Type 3 – Spillback/By-pass Oil Control Valve*  
类型 3-回流/旁路燃油控制阀



*Type 3 – Metering/Simplex Oil Control Valve*  
类型 3-计量/ Simplex 燃油控制阀



Type 2 – Spillback/By-pass Oil Control Valve  
类型2-回流/旁路燃油控制阀



Type 2 – Metering/Simplex Oil Control Valve  
类型2-计量/ Simplex 燃油控制阀

Item No. 项目号	Oil Control Valves 燃油控制阀	Kgs	Part No. 零件号
63	Type 1 – Spillback/By-pass 类型1-回流/旁路	0.60	OVS31015
64	Type 1 – Metering/Simplex 类型1-计量/ Simplex	0.60	OVM31015
65	Type 2 – Spillback/By-pass ; 类型2-回流/旁路	0.60	OVS32016
66	Type 2 – Metering/Simplex 类型2-计量/ Simplex	0.60	OVM32016
67	Type 3 – Spillback/By-pass 类型3-回流/旁路	1.80	OVS33L17
68	Type 3 – Metering/Simplex 类型3-计量/ Simplex	1.80	OVM33L17
69	Type 4 – Spillback/By-pass 类型4-回流/旁路	1.80	OVS34L18
70	Type 4 – Metering/Simplex 类型4-计量/ Simplex	1.80	OVM34L18
71	Type 5 – Spillback/By-pass 类型5-回流/旁路	0.50	OVS35019
72	Type 5 – Metering/Simplex 类型5-计量/ Simplex	0.50	OVM35019
73	Type 6 – Spillback/By-pass 类型6-回流/旁路	0.50	OVS36020
74	Type 6 – Metering/Simplex 类型6-计量/ Simplex	0.50	OVM36020
75	Type 8 – Spillback/By-pass 类型8-回流/旁路	0.50	OVS38022
76	Type 8 – Metering/Simplex 类型8-计量/ Simplex	0.50	OVM38022
77	Type 9 – Spillback/By-pass 类型9-回流/旁路	0.50	OVS39023
78	Type 9 – Metering/Simplex 类型9-计量/ Simplex	0.50	OVM39023
<p><i>Stainless steel body with stainless bobbin and Viton O rings fitted as standard. On certain applications other materials may be required. Please contact Autoflame for more information. All valves are fitted with an NPT thread.</i> 不锈钢阀体标配不锈钢点火线圈和氟橡胶 O 型圈。 某些领域可能需要其他材料。请联系 Autoflame 了解更多信息。所有阀门均配备美标螺纹。</p>			

### 1.9 Gas Control Butterfly Valves (Threaded) 燃气控制蝶阀（带螺纹）



3" Gas Control Butterfly Valve (Threaded) with Small Servomotor  
3"燃气控制蝶阀（带螺纹），配小型伺服电机

Item No. 项目号	Gas Control Butterfly Valves (Threaded) 燃气控制蝶阀（带螺纹）	Kgs	Part No. 零件号
79	BSP 25mm (1")	0.55	GV42521
80	BSP 40mm (1.5")	0.70	GV44022
81	BSP 50mm (2")	0.74	GV45023
82	BSP 65mm (2.5")	0.85	GV46524
83	BSP 80mm (3")	0.98	GV48025
84	BSP 100mm (4")	1.00	GV410026
85	NPT 25mm (1")	0.55	GV42421U
86	NPT 40mm (1.5")	0.70	GV44022U
87	NPT 50mm (2")	0.74	GV45023U
88	NPT 65mm (2.5")	0.85	GV46524U
89	NPT 80mm (3")	0.98	GV48025U
90	NPT 100mm (4")	1.00	GV410026U
<p><i>Valve body manufactured from aluminium. Other materials available on request. Butterfly disc and drive manufactured from 316 Stainless Steel as standard.</i></p> <p>阀体是用铝合金制成，可按要求提供其他材料。阀瓣和驱动是用 316 不锈钢制成。</p>			

## 1.10 Gas Control Butterfly Valves (Flanged 30mm) 燃气控制蝶阀（法兰 30mm）



*Gas Control Butterfly Valve (Flanged 30mm) with Small Servomotor*  
燃气控制蝶阀（法兰 30mm），配小型伺服电机

Item No. 项目号	Gas Control Butterfly Valves (Flanged 30mm) 燃气控制蝶阀（法兰 30mm）	Kgs	Part No. 零件号
91	PN16 65mm (2.5")	5.00	GVF46526/30
92	PN16 80mm (3")	6.00	GVF48027/30
93	PN16 100mm (4")	7.00	GVF410026/30
94	PN16 125mm (5")	8.00	GVF12527/30
95	PN16 150mm (6")	9.00	GVF415028/30
96	ANSI 150lb 65mm (2.5")	5.00	GVF46526/30U
97	ANSI 150lb 80mm (3")	6.00	GVF48027/30U
98	ANSI 150lb 100mm (4")	7.00	GVF410026/30U
99	ANSI 150lb 125mm (5")	8.00	GVF12527/30U
100	ANSI 150lb 150mm (6")	9.00	GVF415028/30U
<p><i>Valve body manufactured from aluminium. Other materials available on request.</i>  <i>Butterfly disc and drive manufactured from 316 Stainless Steel as standard.</i>            阀体是用铝合金制成，可按要求提供其他材料。            阀瓣和驱动是用 316 不锈钢制成。</p>			



*Gas Control Butterfly Valve (Flanged 50mm) with Large Servomotor*  
 燃气控制蝶阀（法兰 50mm），配大型伺服电机

Item No. 项目号	Gas Control Butterfly Valves (Flanged 50mm) 燃气控制蝶阀（法兰 50mm）	Kgs	Part No. 零件号
101	PN16 65mm (2.5")	9.00	GVF46526/50
102	PN16 80mm (3")	10.00	GVF48027/50
103	PN16 100mm (4")	11.00	GVF410026/50
104	PN16 125mm (5")	12.00	GVF12527/50
105	PN16 150mm (6")	13.00	GVF415028/50
106	ANSI 150lb 65mm (2.5")	9.00	GVF46526/50U
107	ANSI 150lb 80mm (3")	10.00	GVF48027/50U
108	ANSI 150lb 100mm (4")	11.00	GVF410026/50U
109	ANSI 150lb 125mm (5")	12.00	GVF12527/50U
110	ANSI 150lb 150mm (6")	13.00	GVF415028/50U
<p><i>Valve body manufactured from aluminium. Other materials available on request.</i>  <i>Butterfly disc and drive manufactured from 316 Stainless Steel as standard.</i>                      阀体是用铝合金制成，可按要求提供其他材料。                      阀瓣和驱动是用 316 不锈钢制成。</p>			



## 2 E.G.A. Modules & Parts 烟气分析仪模块和零件



### 2.1 E.G.A. EVO Components

#### EGA 烟气分析仪组件

*Mk8 Exhaust Gas Analyser  
EVO  
Mk8 尾气分析仪 EVO*

#### Technical Specifications

##### 技术规范

Electrical Supply:	230/110V 50/60Hz
电源	
Power:	160W
功率	
Max Power Consumption:	225W
最大耗电量	
Fuse Rating:	4A
保险丝额定值	
Pump Flow:	110 120mBar, 600mL/min
泵流量	
Environmental Rating:	IP20, NEMA 1
环境保护	
Surrounding Temperature Range:	5°C (40°F) – 40°C (104°F)
周围温度范围	

2 E.G.A. Modules & Parts 尾气分析仪模块和零件

Item No. 项目号	E.G.A. Components 尾气分析仪组件	Kgs	Part No. 零件号
111	Mk8 E.G.A. Sampling Unit Mk8 尾气分析仪采样部件 <i>O<sub>2</sub>, CO<sub>2</sub>, CO &amp; NO analyser, 10.4" full colour touch screen</i> <i>O<sub>2</sub>, CO<sub>2</sub>, CO 和 NO 分析仪, 10.4" 全彩色触摸屏</i>	11.00	MM82004
112	Mk8 E.P.A. E.G.A. Sampling Unit Mk8 E.P.A. 尾气分析仪采样部件 <i>MM820004, EPA Compliant, Self-Cal Box &amp; Heated Sample</i> <i>MM820004, EPA 兼容, 自校准和加热样品</i>	13.00	MM82004/EPA
113	Mk8 M.C.E.R.T. E.G.A. Sampling Unit* Mk8 M.C.E.R.T 尾气分析仪采样部件 <i>MM82004, MCERT's approval</i> <i>MM82004, MCERT 审批</i>	13.00	MM82004/MCERT
114	Mk8 E.G.A. Sampling Unit Mk8 尾气分析仪采样部件 <i>Standard E.G.A. with only CO<sub>2</sub> cell fitted, no SO<sub>2</sub> or NO<sub>2</sub> cells</i> <i>准的尾标气分析仪仅配 CO<sub>2</sub>单元, 无 SO<sub>2</sub> 或 NO<sub>2</sub> 单元</i>	11.00	MM82004/NC
<p><i>*The MCERTs Mk8 E.G.A. Sampling unit will be available upon completion of testing and certification. For further information please contact Autoflame.</i> <i>MCERTMk8 尾气分析仪采样部件测试和认证完成后提供。更多信息请联系 Autoflame.</i></p> <p><i>For the EPA and MCERTE.G.A.'s a Heated Sampling Line will be supplied at a standard length of 3m (10ft). Longer lengths are available, please contact Autoflame for pricing.</i> <i>EPA 和 MCERT 尾气分析仪加热样品管按标准长度 3m (10ft)提供。我们同时提供更长的尺寸, 请联系 Autoflame 了解价格。</i></p>			



*E.G.A. Sampling Probe*  
尾气分析仪采样探头



*External Particulate Filter*  
外部微粒过滤器

## 2 E.G.A. Modules &amp; Parts 尾气分析仪模块和零件

Item No. 项目号	E.G.A. Components 尾气分析仪组件	Kgs	Part No. 零件号
115	Mk7 E.G.A. SO2 Sensor Mk7 尾气分析仪 SO2 传感器 <i>Factory fitted and calibrated, price to be added to E.G.A. price</i> 由厂家安装和调试时费用计算在尾气分析仪价格中。	0.20	EGA80008
116	Mk7 E.G.A. NO2 Sensor Mk7 尾气分析仪 NO2 传感器 <i>Factory fitted and calibrated, price to be added to E.G.A. price</i> 由厂家安装和调试时费用计算在尾气分析仪价格中。	0.20	EGA80009
117	Mk7 E.G.A. Air Inlet Filter Mk7 尾气分析仪空气入口过滤器 <i>Filter assembly includes filter material</i> 过滤器总成包括过滤器材料	2.00	EGA80106
118	E.G.A. Mk7 Sampling Probe (0-400°C or 32-752°F) 尾气分析仪 Mk7 采样探头 (0-400°C 或 32-752°F) <i>Flue gas sampling probe and thermocouple</i> 燃油燃气采用探头和热电偶	1.00	MM10033
119	Chilled E.G.A. Enclosure 尾气分析仪冷却外壳 <i>Front mounted chiller unit to keep E.G.A. cool, excluding E.G.A.</i> 前部安装冷却器保持尾气分析仪冷却，不包括尾气分析仪		EGAENC
120	E.G.A. External Particulate Filter with drain solenoid 尾气分析仪外部微粒过滤器带排水电磁阀 <i>E.G.A. must be returned to office to fit EGA20103/D</i> 尾气分析仪必须返还厂家安装 EGA20103/D	2.00	EGA20103/D
<p><i>Sampling probes can be manufactured with a longer length if required. Please contact Autoflame for a price and lead time.</i> 按要求可以制造的采样探较长头。请联系 Autoflame 了解价格和交货时间。</p> <p><i>Ceramic sampling probe available on request. Please contact Autoflame for a price and lead time.</i> 按要求可以提供陶瓷采样探头。请联系 Autoflame 了解价格和交货时间。</p> <p><i>Heated and plain enclosures available. Please contact Autoflame for pricing.</i> 提供加入外壳和普通外壳，请联系 Autoflame 了解价格。</p>			

### 3 D.T.I. Modules & Parts 数据传输接口模块和零件



Mk7 D.T.I.  
Mk7 数据传输接口

#### 3.1 Remote Monitoring and Control 远程监控

Mains Supply:	230V, +10%/-15%	47 – 63 Hz, Unit max. power consumption 184W
主电源	120V, +10%/-15%	47 – 63 Hz, 单位最大耗电量 184W
Climate:	Temperature	0 to +40°C (32 to 104°F)
	Humidity	0 to 90% non-condensing
气候	温度	0 至 +40°C (32 至 104°F)
	湿度	0 至 90% 不凝结
Storage:	Temperature	-20 to 85°C (-4 to 185°F)
储存	温度	-20 至 85°C (-4 至 185°F)
Protection Rating:	The unit is designed to be panel mounted in any orientation and the front facia is IP65, NEMA4. The back of the unit is IP20, NEMA1.	
防护等级:	设备设计安装朝向是任意方向, 控制模块的前部仪表板防护等级为 IP65, NEMA4.. 设备背部的防护等级是 IP20, NEMA1	

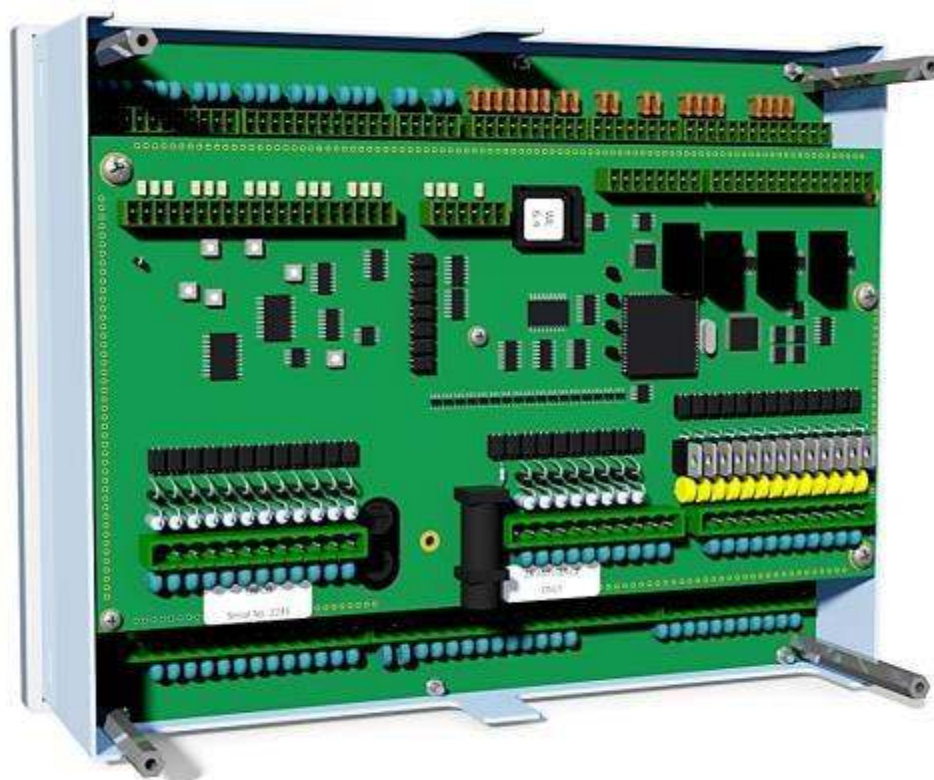
Item No. 项目号	D.T.I. Data Transfer Interface Modules 数据传输接口模块	Kgs	Part No. 零件号
121	Mk7 D.T.I. System Package Mk7 数据传输接口系统包 <i>Ethernet + Modbus , CEMS Supervisor Software</i> 以太网+ Modbus , CEMS 监控软件	3.50	DTI70100
122	Mk7 I/O Module Mk7 输入输出模块 <i>6 x 4-20mA I/O, 16 x 230/110V Inputs, 8 x volt free contacts</i> <i>6 x 4-20mA I/O, 16 x 230/110V 输入, 8 x 无电压触点</i>	1.00	DTI70022
<i>Mk7 D.T.I. &amp; Mk7 I/O Module Voltage is universal (230/110V)</i> <i>Mk7 数据传输接口和 Mk7 输入输出模块的电压通用(230/110V)</i>			

## 3.2 PC Software and Accessories PC 软件和附件

Item No. 项目号	PC Software and Accessories PC 软件和附件	Kgs	Part No. 零件号
123	Mk7 D.T.I. CEMS Manager Software Mk7 数据传输接口 CEMS 管理软件 <i>Licence for CEMS Manager Software</i> CEMS 管理软件许可证	0.25	DTI70101
124	M.M. Infrared Upload/Download Software and IR Lead 微型模块红外上传下载软件和红外导线 <i>Service and commissioning aid &amp; first out annunciation setup</i> 服务和调试帮助与点火控制器设置	0.13	MM60010
125	ProtoNode Converter ProtoNode 转换器 <i>Modbus to BACnet (for use with Mk7 D.T.I.)</i> <i>Modbus 至 BACnet (与 Mk7 数据传输接口搭配使用.)</i>	0.25	DTICONVBAC
126	Download Manager Software on USB Stick + IR Lead 下载管理软件, 接 USB 和红外导线 <i>(including Serial Number and Activation Code)</i> (包括序列号和激活码)	0.13	MM80010
127	Download Manager Software on USB Stick 下载管理软件, 接 USB <i>(including Serial Number and Activation Code)</i> (包括序列号和激活码)	0.00	MM80010/NLA
128	Serial Number and Activation Code for Download Manager Software 下载管理软件序列号和激活码	0.00	MM80010/NLB

## 4 Water Level Control 水位控制

### 4.1 Water Level Control Equipment 水位控制设备



Mk7 Expansion Board  
Mk7 扩展板

Item No. 项目号	Water Level Control Equipment 水位控制设备	Kgs	Part No. 零件号
129	Mk7 Expansion Board Mk7 扩展板 <i>Supplied with MK7PROMS/WL software 提供 MK7PROMS/WL 软件</i>	0.55	EB70001
130	Mk7 Expansion Board & Enclosure Mounting Kit Mk7 扩展板和外壳安装组件 <i>With housing &amp; pillars, supplied with MK7PROMS/WL software 带外壳和支架, 提供 MK7PROMS/WL 软件</i>	0.75	EB70002
131	Temp. Detector, 100mm length 温度检测器, 100mm 长 0-400°F	0.45	MM10006/100
132	Temp. Detector, 150mm length 温度检测器, 150mm 长 0-400°F	0.45	MM10006/150
133	Temp. Detector, 200mm length 温度检测器, 200mm 长 0-400°F	0.45	MM10006/200
134	Temp. Detector, 250mm length 温度检测器, 250mm 长 0-400°F	0.45	MM10006/250
135	Temp. Detector, 400mm length 温度检测器, 400mm 长 0-400°F	0.45	MM10006/400
136	Temp. Detector, 4" length 温度检测器, 4" 长 <i>With a 1/2" electrical conduit adaptor. 0-752°F 带一个 1/2" 电气导管接头</i>	0.45	MM10006/100U
137	Temp. Detector, 6" length 温度检测器, 6" 长 <i>With a 1/2" electrical conduit adaptor. 0-752°F 带一个 1/2" 电气导管接头</i>	0.45	MM10006/150U
138	Temp. Detector, 8" length 温度检测器, 8" 长 <i>With a 1/2" electrical conduit adaptor. 0-752°F 带一个 1/2" 电气导管接头</i>	0.45	MM10006/200U
139	Temp. Detector, 10" length 温度检测器, 10" 长 <i>With a 1/2" electrical conduit adaptor. 0-752°F 带一个 1/2" 电气导管接头</i>	0.45	MM10006/250U
140	Temp. Detector, 15" length 温度检测器, 15" 长 <i>With a 1/2" electrical conduit adaptor. 0-752°F 带一个 1/2" 电气导管接头</i>	0.45	MM10006/400U

## 4.2 Steam Boiler Capacitance Probes 蒸汽锅炉电容探头



Capacitance Probe 电容探头



Capacitance Probe – Internal View 电容探头-内视图

Item No. 项目号	Steam Boiler Capacitance Probes 蒸汽锅炉电容探头	Kgs	Part No. 零件号
141	Capacitance Probe 20" (500mm) 电容探头 20" (500mm) <i>Supplied with 2m (6ft) flying lead 提供 2m (6ft) 飞线</i>	1.50	WLCP500
142	Capacitance Probe 30" (750mm) 电容探头 30" (750mm) <i>Supplied with 2m (6ft) flying lead 提供 2m (6ft) 飞线</i>	1.50	WLCP750
143	Capacitance Probe 40" (1000mm) 电容探头 40" (1000mm) <i>Supplied with 2m (6ft) flying lead 提供 2m (6ft) 飞线</i>	1.50	WLCP1000
144	Capacitance Probe 50" (1250mm) 电容探头 50" (1250mm) <i>Supplied with 2m (6ft) flying lead 提供 2m (6ft) 飞线</i>	1.50	WLCP1250
145	Capacitance Probe 60" (1500mm) 电容探头 60" (1500mm) <i>Supplied with 2m (6ft) flying lead 提供 2m (6ft) 飞线</i>	1.50	WLCP1500
<p><i>Additional capacitance probe lengths are available upon request. Please contact Autoflame for price and availability.</i>                      按要求可以提供额外不同长度的电容探头。请联系 Autoflame 了解价格和是否有该产品。</p>			



**4.3 2<sup>nd</sup> Low Probe 2 级低探头**

Item No. 项目号	2 <sup>nd</sup> Low Probe 2 级低探头	Kgs	Part No. 零件号
146	2 <sup>nd</sup> Low Safety Probe 2 级低安全探头 <i>Supplied with 2m (6ft) flying lead</i> 提供 2m (6ft) 飞线	1.50	SLP70001

**4.4 Total Dissolved Solids Equipment 总溶解固体设备**



Item No. 项目号	Total Dissolved Solids Equipment 总溶解固体设备	Kgs	Part No. 零件号
147	TDS Management, 230V 总溶解固体管理 <i>With complete assembly, including probe and solenoid valve</i> 带完整总成, 包括探头和电磁阀	3.00	TDS70001
148	TDS Management, 110V 总溶解固体管理 <i>With complete assembly, including probe and solenoid valve</i> 带完整总成, 包括探头和电磁阀	3.00	TDS70001/110
149	TDS Management, Modulating, 230V, 1/2" 总溶解固体管理和调节 <i>With complete assembly, including probe, 1/2" modulating valve, 230V servomotor</i> 带完整总成, 包括探头、1/2" 调节阀、230v 伺服电机	3.00	TDS70001/M15
150	TDS Management, Modulating 230V, 3/4" 总溶解固体管理和调节 <i>With complete assembly, including probe, 3/4" modulating valve, 230V servomotor</i> 带完整总成, 包括探头、3/4" 调节阀、230v 伺服电机	3.00	TDS70001/M20
151	TDS Management, Modulating 24V, 1/2" 总溶解固体管理和调节 <i>With complete assembly, including probe, 1/2" modulating valve, 24V servomotor</i> 带完整总成, 包括探头、1/2" 调节阀、24v 伺服电机	3.00	TDS70001/M15/D
148	TDS Management, Modulating 24V, 3/4" 总溶解固体管理和调节 <i>With complete assembly, including probe, 1/2" modulating valve, 24V servomotor</i> 带完整总成, 包括探头、3/4" 调节阀、24v 伺服电机	3.00	TDS70001/M20/D
149	TDS Solenoid Valve, 230V 总溶解固体电磁阀 <i>230V solenoid 230V 电磁阀</i>	1.00	TDS70002
150	TDS Solenoid Valve, 110V 总溶解固体电磁阀 <i>110V Solenoid 110V 电磁阀</i>	1.00	TDS70002/110
151	TDS Probe only 仅是总溶解固体探头	2.00	TDS70003

## 4.5 Feed Water Valves 给水阀



*Threaded Feed Water Valve 0.75" with Large Servomotor  
螺纹给水阀 0.75"，配大型伺服电机*

Item No. 项目号	Feed Water Valves 给水阀	Kgs	Part No. 零件号
156	Threaded Feed Water BSP/NPT (0.5"/15mm) 螺纹给水阀 <i>0.5" Feed water valve with coupling 0.5"给水阀，带耦合器</i>	4.00	WLCVO15
157	Threaded Feed Water BSP/NPT (0.75"/20mm) 螺纹给水阀 <i>0.75" Feed water valve with coupling 0.75"给水阀，带耦合器</i>	5.00	WLCVO20
158	Flanged Feed Water Valve PN40 (1"/40mm) 法兰给水阀 <i>1" Feed water valve with coupling 1"给水阀，带耦合器</i>	7.00	WLCVO25/FL
159	Flanged Feed Water Valve PN40 (1.5"/40mm) 法兰给水阀 <i>1.5" Feed water valve with coupling 1.5"给水阀，带耦合器</i>	8.00	WLCVO40/FL
160	Flanged Feed Water Valve PN40 (2"/40mm) 法兰给水阀 <i>2" Feed water valve with coupling 2"给水阀，带耦合器</i>	9.00	WLCVO50/FL
161	Flanged Feed Water Valve ANSI 300lb (1"/40mm) 法兰给水阀 <i>1" Feed water valve with coupling 1"给水阀，带耦合器</i>	7.00	WLCVO25/FLU
162	Flanged Feed Water Valve ANSI 300lb (1.5"/40mm) 法兰给水阀 <i>1.5" Feed water valve with coupling 1.5"给水阀，带耦合器</i>	8.00	WLCVO40/FLU
163	Flanged Feed Water Valve ANSI 300lb (2"/40mm) 法兰给水阀 <i>2" Feed water valve with coupling 2"给水阀，带耦合器</i>	9.00	WLCVO50/FLU
<p><i>The feed water valves are equipped with couplings and mounting brackets. The feed water valves are not supplied with servomotor. For the 0.5" and 0.75" valves, large servomotors must be used, for 1" and 1.5" valves UNIC05 servomotors, for the 2" UNIC20.</i></p> <p>给水阀配耦合器和安装板。 给水阀不提供伺服电机。0.5" 和 0.75"给水阀必须使用大型伺服电机，1" and 1.5"给水阀使用 UNIC05 伺服电机，2"给水阀使用 UNIC20.伺服电机。</p>			

## 4.6 Bottom Blowdown 底部排污

Item No. 项目号	Bottom Blowdown Valves 底部排污阀	Kgs	Part No. 零件号
164	1" (25mm) Bottom Blowdown Valve 底部排污阀 ANSI 300lbs Flanged, Stainless Steel body, fitted with Tek-Fil seat ANSI 300lbs 法兰, 不锈钢体, 配 Tek-Fil 底座		BBV025FLU
165	1" (25mm) Bottom Blowdown Valve 底部排污阀 PN16/40 Flanged, Stainless Steel body, fitted with Tek-Fil seat 法兰, 不锈钢体, 配 Tek-Fil 底座		BBV025FL
166	1.5"(40mm) Bottom Blowdown Valve 底部排污阀 ANSI 300lbs Flanged, Stainless Steel body, fitted with Tek-Fil seat ANSI 300lbs 法兰, 不锈钢体, 配 Tek-Fil 底座		BBV040FLU
167	1.5"(40mm) Bottom Blowdown Valve 底部排污阀 PN16/40 Flanged, Stainless Steel body, fitted with Tek-Fil seat 法兰, 不锈钢体, 配 Tek-Fil 底座		BBV040FL
168	2"(50mm) Bottom Blowdown Valve 底部排污阀 ANSI 300lbs Flanged, Stainless Steel body, fitted with Tek-Fil seat 法兰, 不锈钢体, 配 Tek-Fil 底座		BBV050FLU
169	2" (50mm) Bottom Blowdown Valve 底部排污阀 PN16/40 Flanged, Stainless Steel body, fitted with Tek-Fil seat 法兰, 不锈钢体, 配 Tek-Fil 底座		BBV050FL
170	Bottom Blowdown Control Module 底部排污控制模块 110/230V 50/60Hz – Battery not included, contact Autoflame 不包括蓄电池, 请联系		BBC70004
171	Bottom Blowdown Industrial Actuator 05 底部排污工业执行器 24V DC Only, 40NM 37ft lbs IP65, -25 to 55°C (-13 to 131°F)		BBA10070
172	Bottom Blowdown Industrial Actuator 10* 底部排污工业执行器 24V DC Only, 40NM 37ft lbs IP65, -25 to 55°C (-13 to 131°F)		BBA10072
173	1"(25mm) Bottom Blowdown Valve 底部排污阀 Complete with 24V DC Actuator and Control Module 配 24V DC 执行器和控制模块		BBV025 System
174	1.5"(40mm) Bottom Blowdown Valve 底部排污阀 Complete with 24V DC Actuator and Control Module 配 24V DC 执行器和控制模块		BBV040 System
175	2"(50mm) Bottom Blowdown Valve 底部排污阀 Complete with 24V DC Actuator and Control Module 配 24V DC 执行器和控制模块		BBV050 System
	<p>*For use with 2" Bottom Blow Down Valve. 仅用于 2"底部排污阀。</p> <p>All costs exclude any kind of approval and/or testing that may be required. Also excludes additional hardware/mating flanges etc. or any kind of installation, service or calibration. 所有费用均不包括审批和/或测试, 也不包括额外硬件和匹配法兰等, 不包括安装、服务或校准。</p>		

## 5 Peripheral & Spare Parts 周边及备件

### 5.1 End Switch Proving 终端开关校验

Item No.	End Switch Proving	Kgs	Part No.
项目号	终端开关校验		零件号
176	End Switch Proving Unit 终端开关校验设备 With 1 metre lead(3ft) 带 1 米导线(3ft)	1.00	MM70009PPU
177	Small Oil Valve Base Plate 小油阀板 Allows for end switch proving unit to be mounted to existing small oil valve 用于将终端开关校验设备装于现有的小油阀。	0.10	MM70009OVSM
178	Large Oil Valve Base Plate 大油阀板 Allows for end switch proving unit to be mounted to existing large oil valve 用于将终端 开关校验设备装于现有的大油阀。	0.10	MM70009OVLRG
179	Air Damper Mounting Kit 空气阻尼器安装组件	0.20	MM70009UMK
End switches must be ordered separately. They are not included with modified gas or oil valves. Please contact Autoflame for more information. 终端开关必须单独订购。改良燃气或燃油阀不包括终端开关。请联系 Autoflame 了解更多信息。			

### 5.2 End Switch Proving – Modified Oil Valves 终端开关校验-改良油阀

Item No.	End Switch Proving – Modified Oil Valves	Kgs	Part No.
项目号	终端开关校验-改良油阀		零件号
180	Type 1 – Spillback/By-pass 类型 1 – 回流/旁路 Modified for mounting end switch proving unit 改良油阀用于安装终端开关校验设备	0.60	OVS31015/VA
181	Type 1 – Metering/Simplex 类型 1-计量/ Simplex Modified for mounting end switch proving unit 改良油阀用于安装终端开关校验设备	0.60	OVM31015/VA
182	Type 2 – Spillback/By-pass 类型 2- 回流/旁路 Modified for mounting end switch proving unit 改良油阀用于安装终端开关校验设备	0.60	OVS32016/VA
183	Type 2 – Metering/Simplex 类型 2-计量/ Simplex Modified for mounting end switch proving unit 改良油阀用于安装终端开关校验设备	0.60	OVM32016/VA
184	Type 3 – Spillback/By-pass 类型 3- 回流/旁路 Modified for mounting end switch proving unit 改良油阀用于安装终端开关校验设备	1.80	OVS33L17/VA
185	Type 3 – Metering/Simplex 类型 3-计量/ Simplex Modified for mounting end switch proving unit 改良油阀用于安装终端开关校验设备	1.80	OVM33L17/VA
186	Type 4 – Spillback/By-pass 类型 4 – 回流/旁路 Modified for mounting end switch proving unit 改良油阀用于安装终端开关校验设备	1.80	OVS34L18/VA
187	Type 4 – Metering/Simplex 类型 4-计量/ Simplex Modified for mounting end switch proving unit 改良油阀用于安装终端开关校验设备	1.80	OVM34L18/VA
188	Type 5 – Spillback/By-pass 类型 5 – 回流/旁路 Modified for mounting end switch proving unit 改良油阀用于安装终端开关校验设备	0.50	OVS35019/VA
189	Type 5 – Metering/Simplex 类型 5-计量/ Simplex Modified for mounting end switch proving unit 改良油阀用于安装终端开关校验设备	0.50	OVM35019/VA
190	Type 6 – Spillback/By-pass 类型 6- 回流/旁路 Modified for mounting end switch proving unit 改良油阀用于安装终端开关校验设备	0.50	OVS36020/VA
191	Type 6 – Metering/Simplex 类型 6-计量/ Simplex Modified for mounting end switch proving unit 改良油阀用于安装终端开关校验设备	0.50	OVM36020/VA
192	Type 8 – Spillback/By-pass 类型 8- 回流/旁路 Modified for mounting end switch proving unit 改良油阀用于安装终端开关校验设备	0.50	OVS38022/VA
193	Type 8 – Metering/Simplex 类型 8-计量/ Simplex Modified for mounting end switch proving unit 改良油阀用于安装终端开关校验设备	0.50	OVM38022/VA
194	Type 9 – Spillback/By-pass 类型 9- 回流/旁路 Modified for mounting end switch proving unit 改良油阀用于安装终端开关校验设备	0.50	OVS39023/VA
195	Type 9 – Metering Simplex 类型 9-计量/ Simplex Modified for mounting end switch proving unit 改良油阀用于安装终端开关校验设备	0.50	OVM39023/VA
End switches must be ordered separately, they are not included with modified oil valves. 终端开关必须单独订购。改良油阀不包括终端开关。			

### 5.3 End Switch Proving Gas Control Butterfly Valves

#### 终端开关校验-燃气控制蝶阀

Item No.	End Switch Proving – Modified Gas Butterfly Valves	Kgs	Part No.
项目号	终端开关校验-改良燃气蝶阀		零件号
196	ANSI 150lb 65mm (2.5") <i>Thickness -30mm. Modified for mounting end switch proving unit, mounting kit</i> 厚度 30mm, 改良蝶阀用于安装终端开关校验设备和安装组件。	5.00	GVF46526/30U/VA
197	ANSI 150lb 80mm (3") <i>Thickness -30mm. Modified for mounting end switch proving unit, mounting kit</i> 厚度 30mm, 改良蝶阀用于安装终端开关校验设备和安装组件。	6.00	GVF48027/30U/VA
198	ANSI 150lb 100mm (4") <i>Thickness -30mm. Modified for mounting end switch proving unit, mounting kit</i> 厚度 30mm, 改良蝶阀用于安装终端开关校验设备和安装组件。	7.00	GVF41006/30U/VA
199	ANSI 150lb 125mm (5") <i>Thickness -30mm. Modified for mounting end switch proving unit, mounting kit</i> 厚度 30mm, 改良蝶阀用于安装终端开关校验设备和安装组件。	8.00	GVF42527/30U/VA
200	ANSI 150lb 150mm (6") <i>Thickness -30mm. Modified for mounting end switch proving unit, mounting kit</i> 厚度 30mm, 改良蝶阀用于安装终端开关校验设备和安装组件。	9.00	GVF415028/30U/VA
201	ANSI 150lb 65mm (2.5") <i>Thickness -50mm. Modified for mounting end switch proving unit, mounting kit</i> 厚度 50mm, 改良蝶阀用于安装终端开关校验设备和安装组件。	9.00	GVF46526/50U/VA
202	ANSI 150lb 80mm (3") <i>Thickness -50mm. Modified for mounting end switch proving unit, mounting kit</i> 厚度 50mm, 改良蝶阀用于安装终端开关校验设备和安装组件。	10.00	GVF48027/50U/VA
203	ANSI 150lb 100mm (4") <i>Thickness -50mm. Modified for mounting end switch proving unit, mounting kit</i> 厚度 50mm, 改良蝶阀用于安装终端开关校验设备和安装组件。	11.00	GVF410026/50U/VA
204	ANSI 150lb 125mm (5") <i>Thickness -50mm. Modified for mounting end switch proving unit, mounting kit</i> 厚度 50mm, 改良蝶阀用于安装终端开关校验设备和安装组件。	12.00	GVF42527/50U/VA
205	ANSI 150lb 150mm (6") <i>Thickness -50mm. Modified for mounting end switch proving unit, mounting kit</i> 厚度 50mm, 改良蝶阀用于安装终端开关校验设备和安装组件。	13.00	GVF415028/50U/VA
<i>End switches must be ordered separately, they are not included with modified gas valves.</i> 终端开关必须单独订购。改良燃气阀不包括终端开关。			

## 5.4 Flue Gas Recirculation (FGR) Valves 废气再循环阀



Flue Gas Recirculation Valve  
废气再循环阀

Item No.	Flue Gas Recirculation (FGR) Valves	Kgs	Part No.
项目号	废气再循环阀		零件号
206	PN16 100mm(4") Thickness-50mm 厚度 50mm		FGRV410026/50
207	PN16 150mm(6") Thickness-50mm 厚度 50mm		FGRV415028/50
208	PN16 200mm(8") Thickness-50mm 厚度 50mm		FGRV420029/50
209	PN16 250mm(10") Thickness-50mm 厚度 50mm		FGRV425030/50
210	PN16 300mm(12") Thickness-50mm 厚度 50mm		FGRV430031/50
211	ANSI 150lb 100mm(4") Thickness-50mm 厚度 50mm		FGRV410026/50U
212	ANSI 150lb 150mm(6") Thickness-50mm 厚度 50mm		FGRV415028/50U
213	ANSI 150lb 200mm(8") Thickness-50mm 厚度 50mm		FGRV420029/50U
214	ANSI 150lb 250mm(10") Thickness-50mm 厚度 50mm		FGRV425030/50U
215	ANSI 150lb 300mm(12") Thickness-50mm 厚度 50mm		FGRV430031/50U
<p>Valve manufactured from 303 Stainless steel. 再循环阀是用 303 不锈钢制成。 Please contact Autoflame if the size you require is not listed. 如果未列出您需要的尺寸时请联系 Autoflame</p>			

## 5.5 Hazardous Environment/ Explosion Proof Equipment ATEX 危险环境/防爆设备



Small Servo Motor, 230V, ATEX Approved ATEX 认证小型伺服电机,

Item No. 项目号	Hazardous Environment/Explosion Proof with ATEX 危险环境/防爆, 带 ATEX 认证	Kgs	Part No. 零件号
216	Large Servo Motor, 230V 50/60Hz 大型伺服电机 25Nm, 18ft lbs. Ex nA nL IIC T4	1.85	MM10004/EXP
217	Large Servo Motor, 244V 50/60Hz 大型伺服电机 25Nm, 18ft lbs. Ex nA nL IIC T4	1.85	MM10004/D/EXP
218	Small Servo Motor, 230V 50Hz *Pending Approval* 4Nm, 3ft lbs. Ex nA nL IIC T4 小型伺服电机“待审批”	1.85	MM10005/EXP
219	Small Servo Motor, 230V 60Hz *Pending Approval* 4Nm, 3ft lbs. Ex nA nL IIC T4 小型伺服电机“待审批”	1.85	MM10005/B/EXP
220	Small Servo Motor, 24V 60Hz *Pending Approval* 4Nm, 3ft lbs. Ex nA nL IIC T4 小型伺服电机“待审批”	1.85	MM10005/D/EXP
221	Small Servo Motor, 24V 50Hz *Pending Approval* 4Nm, 3ft lbs. Ex nA nL IIC T4 小型伺服电机“待审批”	1.85	MM10005/C/EXP
222	Industrial Servo Motor 10, 230V 工业伺服电机 98Nm, 72ft lbs. Ex nA nL IIC T4	6.00	MM10072/EXP
223	Industrial Servo Motor 10, 120V 工业伺服电机 98Nm, 72 ft lbs. Ex nA nL IIC T4	6.00	MM10072/110/EXP
224	Air Pressure Sensor 空气压力传感器 0 to 65mBar, 0 to 25" wg, 0 to 1 PSI. Ex Na IIC Gc	0.42	MM60005/EXP
225	Air Pressure Sensor 空气压力传感器 0 to 120mBar, 0 to 50"wg, 0 to 2 PSI. Ex Na IIC Gc	0.42	MM60013/EXP
226	Gas Pressure Sensor 燃气压力传感器 12.5 to 65mBar, 5 to 25"wg, 0.18 to 1 PSI. Ex Na IIC Gc	0.42	MM60006/EXP
227	Gas Pressure Sensor 燃气压力传感器 52 to 340mBar, 25 to 1325"wg, 0.75 to 5 PSI. Ex Na IIC Gc	0.42	MM60008/EXP
228	Gas Pressure Sensor 燃气压力传感器 115 to 750mBar, 50 to 300"wg, 1.8 to 11 PSI. Ex Na IIC Gc	0.42	MM60011/EXP
229	Gas Pressure Sensor 燃气压力传感器 207 to 1380mBar, 83 to 550"wg, 3 to 20 PSI. Ex Na IIC Gc	0.42	MM60012/EXP
230	Gas Pressure Sensor 燃气压力传感器 0 to 4mBar, 162 to 1620"wg, 6 to 60 PSI. Ex Na IIC Gc	0.42	MM60014/EXP
231	UV Sensor, End View – Explosion Proof 紫外线传感器, 端视图-防爆 ½" connection ½" 连接	0.20	MM60004/U/EXP
232	Self Check UV Sensor – Explosion Proof 自检紫外线传感器-防爆 High Sensitivity, End View only, 1" connection 高灵敏度, 端视图, 1"连接	0.80	MM60003/HS/EXP
Please note voltage and frequency. 请注明电压和频率 Servo motors are not supplied as standard with mounting kits. 标准伺服电机不提供安装组件			

## 5.6 Factory Built Single Fuel UL Control Panel 工厂造单燃料 UL 控制面板

Item No.	Factory Built Control Panels – Single Fuel UL Panel	Kgs	Part No.
项目号	工厂造控制面板 -单燃料 UL 控制面板		零件号
233	Single fuel UL panel 230V 单燃料 UL 控制面板 <i>Fitted with Mk7 M.M. 配备 Mk7 控制模块</i>		CP1MK7/E
234	Single fuel UL panel 110V 单燃料 UL 控制面板 <i>Fitted with Mk7 M.M. 配备 Mk7 控制模块</i>		CP1MK7/E/110
235	Single fuel UL panel 230V 单燃料 UL 控制面板 <i>Fitted with Mk7 M.M. &amp; First Out Annunciation 配备 Mk7 控制模块和点火控制器</i>		CP1AMK7/E
236	Single fuel UL panel 110V 单燃料 UL 控制面板 <i>Fitted with Mk7 M.M. &amp; First Out Annunciation 配备 Mk7 控制模块和点火控制器</i>		CP1AMK7/E/110
237	Single fuel UL panel 230V 单燃料 UL 控制面板 <i>Fitted with Mk7 M.M., First Out Annunciation &amp; Water Level 配备 Mk7 控制模块和、点火控制器和水位控制器</i>		CP1WMK7/E
238	Single fuel UL panel 110V 单燃料 UL 控制面板 <i>Fitted with Mk7 M.M. First Out Annunciation &amp; Water Level 配备 Mk7 控制模块和、点火控制器和水位控制器</i>		CP1WMK7/E/110
239	Single fuel UL panel 230V 单燃料 UL 控制面板 <i>Fitted with Mini Mk8 M.M. 配备 Mk8 微型控制模块</i>		CP1MMK8/E
240	Single fuel UL panel 110V 单燃料 UL 控制面板 <i>Fitted with Mini Mk8 M.M. 配备 Mk8 微型控制模块</i>		CP1MMK8/E/110
<p><i>Standard specification control panel: 标准规范控制面板</i>  <i>Equipped with Autoflame M.M. controller. NEMA4 powder coated enclosure to match M.M. controller. Fully wired and tested. Supplied with control panel drawings.</i>  <i>配备 Autoflame 微型控制模块控制器, NEMA4 粉末涂层外壳与微型控制模块控制器匹配。经过接线和测试。提供控制面板图纸。</i></p> <p><i>Standard panel size – 800mm x 600mm x 300mm enclosure (31.4" x 23.6" x 11.8")</i>  <i>Standard water level panel size – 800mm x 800mm x 300m enclosure (31.4" x 41.4" x 11.8")</i>  <i>标准面板尺寸-800mm x 600mm x 300mm 外壳(31.4" x 23.6" x 11.8")</i>  <i>标准水位面板尺寸-800mm x 800mm x 300m 外壳(31.4" x 41.4" x 11.8")</i></p> <p><i>Standard single fuel scope of supply includes: 标准单燃料供货范围包括</i>  <i>Fuel 1 On/Off Push Button – Panel on Lamp – Burner on/Off Switch – Lockout Alarm/Reset – Hand/Auto/Low Flame Hold Switch(Not available on Mini Mk7) – Lamp as per customer request</i>  <i>根据客户要求提供燃料 1 On/Off 按钮-面板灯-燃烧器 on/Off 开关-锁定报警/重置-手动/自动/低火焰保持按钮 (Mk7 微型控制模块未配备) -照明灯</i></p> <p><i>Standard Single Fuel Water Level scope of supply includes: Fuel 1 On/Off Push Button – Panel On Lamp – Burner On/Off Switch – Lockout Alarm/Reset – Hand/Auto/Low Flame Hold Switch(Not available on Mini Mk8) – High Water Lamp – Low Water Lamp – 2<sup>nd</sup> Low Water Lamp – Water Level System Test – Water Level Alarm Mute</i>  <i>标准单燃料/水位供货范围包括: 燃料 1 On/Off 按钮-面板灯-燃烧器 on/Off 开关-锁定报警/重置-手动/自动/低火焰保持按钮 (Mk8 微型控制模块未配备) -高水位灯-低水位灯-第二低水位灯-水位系统测试-水位报警静音</i></p> <p><i>Additional lamps/switches are available upon request. Fuses and contactors with overloads are not supplied as standard. 根据要求提供额外照明灯和开关。保险丝和接触器不作为标准件提供。</i></p> <p><i>Please contact Autoflame before ordering a panel so that the specifics can be determined at an early date. After receiving an order for a panel, drawings will be submitted for approval by the customer. 订购面板前请联系 Autoflame, 以便事先确定规格。收到面板订单后, 我们将提供图纸供客户审批。</i></p> <p><i>Once approved, manufacturing will commence. Lead-times on control panels vary from 4 to 6 weeks from approval of drawings. Prices are subject to change due to specific customer requirements. 审批通过后将开始制造。控制面板的交付时间从审批通过时计算为 4 至 6 周。客户如特殊要求时价格可能会不同。</i></p> <p><i>Custom sizes are available on request. Please contact Autoflame for further information and a quote on non-standard panels.</i>  <i>根据要求可以提供定制尺寸。请联系 Autoflame 了解更多信息和非标准面板价格。</i></p>			



## 5.7 Factory Built Dual Fuel UL Control Panel 工厂造双燃料 UL 控制面板

Item No. 项目号	Factory Built Control Panels – Dual Fuel UL Panel 工厂造控制面板-双燃料 UL 面板	Kgs	Part No. 零件号
241	Dual fuel UL panel 230V 双燃料 UL 控制面板 <i>Fitted with Mk7 M.M. 配备 MK7 控制模块</i>		CP2MK7/E
242	Dual fuel UL panel 110V 双燃料 UL 控制面板 <i>Fitted with Mk7 M.M. 配备 MK7 控制模块</i>		CP2MK7/E/110
243	Dual fuel UL panel 230V 双燃料 UL 控制面板 <i>Fitted with Mk7 M.M. &amp; First Out Annunciation 配备 Mk7 控制模块和点火控制器</i>		CP2AMK7/E
244	Dual fuel UL panel 110V 双燃料 UL 控制面板 <i>Fitted with Mk7 M.M. &amp; First Out Annunciation 配备 Mk7 控制模块和点火控制器</i>		CP2AMK7/E/110
245	Dual fuel UL panel 230V 双燃料 UL 控制面板 <i>Fitted with Mk7 M.M., First Out Annunciation &amp; Water Level 配备 Mk7 控制模块和、点火控制器和水位控制器</i>		CP2WMK7/E
246	Dual fuel UL panel 110V 双燃料 UL 控制面板 <i>Fitted with Mk7 M.M. First Out Annunciation &amp; Water Level 配备 Mk7 控制模块和、点火控制器和水位控制器</i>		CP2WMK7/E/110
247	Dual fuel UL panel 230V 双燃料 UL 控制面板 <i>Fitted with Mini Mk8 M.M. 配备 Mk8 微型控制模块</i>		CP2MMK8/E
248	Dual fuel UL panel 110V 双燃料 UL 控制面板 <i>Fitted with Mini M87 M.M. 配备 Mk8 微型控制模块</i>		CP2MMK8/E/110
<p><i>Standard specification control panel: 标准规格控制面板: Equipped with Autoflame M.M. controller. NEMA4 powder coated enclosure to match M.M. controller. Fully wired and tested. Supplied with control panel drawings. 配备 Autoflame 微型控制模块控制器, NEMA4 粉末涂层外壳与微型控制模块控制器匹配。经过接线和测试。提供控制面板图纸。</i></p> <p><i>Standard panel size– 800mm x 600mm x 300mm enclosure (31.4” x 23.6” x 11.8”) Standard water level panel size– 800mm x 800mm x 300m enclosure (31.4” x 41.4” x 11.8”) 标准面板尺寸-800mm x 600mm x 300mm 外壳(31.4” x 23.6” x 11.8”) 标准水位面板尺寸-800mm x 800mm x 300m 外壳(31.4” x 41.4” x 11.8”)</i></p> <p><i>Standard dual fuel scope of supply includes: 标准双燃料供货范围包括 Fuel 1 On/Off Push Button – Fuel 2 On/Off Push Button – Burner on/Off Switch – Lockout Alarm/Reset – Hand/Auto/Low Flame Hold Switch(Not available on Mini Mk8) – Lamp as per customer request 根据客户要求提供燃料 1 On/Off 按钮-面板灯-燃料 2 On/Off 按钮-燃烧器 on/Off 开关-锁定报警/重置-手动/自动/低火焰保持按钮 (Mk8 微型控制模块未配备) -照明灯</i></p> <p><i>Standard dual fuel water level scope of supply includes: Fuel 1 On/Off Push Button – Fuel 2 On/Off Push Button – Burner On/Off Switch – Lockout Alarm/Reset – Hand/Auto/Low Flame Hold Switch(Not available on Mini Mk7) – High Water Lamp – Low Water Lamp – 2<sup>nd</sup> Low Water Lamp – Water Level System Test – Water Level Alarm Mute 标准双燃料/水位供货范围包括: 燃料 1 On/Off 按钮-燃料 2 On/Off 按钮-燃烧器 on/Off 开关-锁定报警/重置-手动/自动/低火焰保持按钮 (Mk7 微型控制模块未配备) -高水位灯-低水位灯-第二低水位灯-水位系统测试-水位报警静音</i></p> <p><i>Additional lamps/switches are available upon request. Fuses and contactors with overloads are not supplied as standard. 根据要求提供额外照明灯和开关。保险丝和接触器不作为标准件提供。</i></p> <p><i>Please contact Autoflame before ordering a panel so that the specifics can be determined at an early date. After receiving an order for a panel, drawings will be submitted for approval by the customer. 订购面板前请联系 Autoflame, 以便事先确定规格。收到面板订单后, 我们将提供图纸供客户审批。</i></p> <p><i>Once approved, manufacturing will commence. Lead-times on control panels vary from 4 to 6 weeks from approval of drawings. Prices are subject to change due to specific customer requirements. 审批通过后将开始制造。控制面板的交付时间从审批通过时计算为 4 至 6 周。客户如特殊要求时价格可能会不同。</i></p> <p><i>Custom sizes are available on request. Please contact Autoflame for further information and a quote on non-standard panels. 根据要求可以提供定制尺寸。请联系 Autoflame 了解更多信息和非标准面板价格。</i></p>			

## 5.8 CB Control Panel Retrofit CB 改良控制面板

Item No.	CB Control Panel Retrofit Single/Dual Fuel UL Panel	Kgs	Part No.
项目号	CB 控制面板改型单/双燃料 UL 控制面板		零件号
249	Single fuel UL panel 230V 单燃料 UL 控制面板 <i>Fitted with Mk7 M.M., CB control panel retrofit 配备 Mk7 控制模块, CB 改良控制面板</i>		CP1MK7/E/CB
250	Dual fuel UL panel 110V 双燃料 UL 控制面板 <i>Fitted with Mk7 M.M., CB control panel retrofit 配备 Mk7 控制模块, CB 改良控制面板</i>		CP2MK7/E/CB
251	Single fuel UL panel 230V 单燃料 UL 控制面板 <i>Fitted with Mini Mk8 M.M., CB control panel retrofit 配备 Mk8 微型控制模块, CB 改良控制面</i>		CP1/MMK8/E/CB
252	Dual fuel UL panel 110V 双燃料 UL 控制面板 <i>Fitted with Mini Mk8 M.M., CB control panel retrofit 配备 Mk8 微型控制模块, CB 改良控制面</i>		CP2/MMK8/E/CB
<p><i>Standard specification control panel: 标准规格控制面板: Equipped with Autoflame M.M. controller. NEMA4 powder coated enclosure to match M.M. controller. Fully wired and tested. Supplied with control panel drawings. 配备 Autoflame 微型控制模块控制器, NEMA4 粉末涂层外壳与微型控制模块控制器匹配。经过接线和测试。提供控制面板图纸。</i></p> <p><i>Standard panel size– 600mm x 500mm x 210mm enclosure (23.6” x 19.7” x 8.3”) 标准面板尺寸-600mm x 500mm x 210mm 外壳 (23.6” x 19.7” x 8.3”)</i></p> <p><i>Standard scope of supply includes: 标准供货范围包括: Fuel Select OFF/Fuel 1 switch (single fuel) or Fuel Select Fuel 1/OFF/Fuel 2 switch (dual fuel) – Burner On/Off Switch – Lockout Alarm Mute – Hand/Auto/Low Flame Hold Switch (Not available on Mini Mk8) – Lamp as per customer request. 根据客户要求提供燃料选择 OFF/燃料 1 开关 (单燃料) 或燃料选择燃料 1/OFF/燃料 2 开关 (双燃料) - 燃烧器 On/Off 开关-锁定报警静音/手动/自动/低火焰保持开关 (Mk8 微型控制模块未配备) -照明灯</i></p> <p><i>Note: 110V direct supply only, transformers and Variable Speed Drive cannot be added to this panel. Also water level, first out annunciation, additional lamps/switches, fuses and contactors are not available due to panel size. 注: 110V 直流电源、变压器和变速驱动器不可加入本面板。同时水位控制器、点火控制器、额外照明灯/开关、保险丝和连接器因面板尺寸不同而不提供。</i></p> <p><i>Please contact Autoflame before ordering a panel so that the specifics can be determined at an early date. After receiving an order for a panel, drawings will be submitted for approval by the customer. 订购面板前请联系 Autoflame, 以便事先确定规格。收到面板订单后, 我们将提供图纸供客户审批。</i></p> <p><i>Once approved, manufacturing will commence. Lead-times on control panels vary from 4 to 6 weeks from approval of drawings. Prices are subject to change due to specific customer requirements. 审批通过后将开始制造。控制面板的交付时间从审批通过时计算为 4 至 6 周。客户如特殊要求时价格可能会不同。 Custom sizes are available on request. Please contact Autoflame for further information and a quote on non-standard panels. 根据要求可以提供定制尺寸。请联系 Autoflame 了解更多信息和非标准面板价格。</i></p>			

## 5.9 Mini Mk8 M.M. Control Panel Mk8 微型控制模块控制面板

Item No. 项目号	Mini Mk8 M.M. Control Panel Single/Dual Pending UL Mk8 微型控制模块控制面板-单/双燃料待定 UL 控制面板	Kgs	Part No. 零件号
253	Single Fuel UL Panel 230V 单燃料 UL 控制面板 <i>Fitted with Mini Mk8 M.M. 配备 MK8 微型控制模块</i>		CP1MMK7/E/SM
254	Single Fuel UL Panel 110V 单燃料 UL 控制面板 <i>Fitted with Mini Mk8 M.M. 配备 MK8 微型控制模块</i>		CP1MMK7/E/110/SM
255	Dual Fuel UL Panel 230V 双燃料 UL 控制面板 <i>Fitted with Mini Mk8 M.M. 配备 MK8 微型控制模块</i>		CP2MMK7/E/SM
256	Dual Fuel UL Panel 110V 双燃料 UL 控制面板 <i>Fitted with Mini Mk8 M.M. 配备 MK8 微型控制模块</i>		CP2MMK7/E/110/SM
257	Flying Lead 飞线 <i>3m(9.8ft) flying lead longer lengths available on request 按要求可提供更长的3m(9.8ft) 飞线</i>		CP1SMFLY
<p><i>Equipped with Autoflame Mini Mk8 M.M. controller. NEMA4 powder coated enclosure to match Mini Mk8 M.M.. Fully wired and tested. Supplied with control panel drawings. 配备 Autoflame Mk8 微型控制模块控制器, NEMA4 粉末涂层外壳与微型控制模块控制器匹配。经过接线和测试。提供控制面板图纸。</i></p> <p><i>Standard panel size – 320mm x 320mm x 210mm enclosure (12.6” x 12.6” x 8.3”), 371mm x 320mm x 214mm mounting bracket (14.6” x 12.6” x 8.3”) 标准面板尺寸-320mm x 320mm x 210mm 外壳(12.6” x 12.6” x 8.3”), 371mm x 320mm x 214mm 安装支架(14.6” x 12.6” x 8.3”)</i></p> <p><i>Standard scope of supply includes: 标准供货范围包括: Fuel select Off/Fuel 1 switch (single fuel) or Fuel Select FUEL 1/OFF/FUEL 2 switch (dual fuel) – Burner On/Off Switch – Error/Lockout Lamp. 燃料选择 OFF/燃料 1 开关 (单燃料) 或燃料选择燃料 1/OFF/燃料 2 开关 (双燃料) - 燃烧器 On/Off 开关-错误/锁定灯。</i></p> <p><i>A 3Phase Direct Online Motor Starter up to 7.5kW (10HP) can be added to this panel and can be used in conjunction with an external Variable Speed Drive. 7.5kW (10HP) 3 相直接在线电机起动器可以加入本面板并可以与外部变速驱动器同时使用。</i></p> <p><i>Note: Mini Mk8 M.M. only. Control circuit transformers cannot be added to this panel. Also additional lamps/switches, fuses and contactors are not available due to panel size. 注:仅适用 Mk8 微型控制模块。控制电路变压器不能加入本面板。同时额外照明灯/开关、保险丝和连接器因面板尺寸不同而不提供</i></p> <p><i>Please contact Autoflame before ordering a panel so that the specifics can be determined at an early date. After receiving an order for a panel, drawings will be submitted for approval by the customer. 订购面板前请联系 Autoflame, 以便事先确定规格。收到面板订单后, 我们将提供图纸供客户审批。</i></p> <p><i>Once approved, manufacturing will commence. Lead-times on control panels vary from 4 to 6 weeks from approval of drawings. Prices are subject to change due to specific customer requirements. 审批通过后将开始制造。控制面板的交付时间从审批通过时计算为 4 至 6 周。客户如特殊要求时价格可能会不同。</i></p> <p><i>Custom sizes are available on request. Please contact Autoflame for further information and a quote on non-standard panels. 根据要求可以提供定制尺寸。请联系 Autoflame 了解更多信息和非标准面板价格。</i></p>			

## 5.10 Danfoss Variable Speed Drives – Panel Mounted

### Danfoss 变速驱动器-安装面板

Item No. 项目号	Danfoss Variable Speed Drives – Panel Mounted Danfoss 变速驱动器-安装面板	Kgs	Part No. 零件号
	<b>VLT® HVAC IP20 Drive 380/480V 3 Phase, 50/60Hz</b> <b>VLT® HVAC IP20 驱动 380/480V 3 相, 50/60Hz</b>		
258	1.1kW/1.5hp <i>To fit 1000x600x300mm (39"x24"x12") panel 适用 1000x600x300mm</i>		1K1PANEL <i>(39"x24"x12") 面板</i>
259	1.5kW/2.0hp <i>To fit 1000x600x300mm (39"x24"x12") panel 适用 1000x600x300mm</i>		1K5PANEL <i>(39"x24"x12") 面板</i>
260	2.2kW/2.9hp <i>To fit 1000x600x300mm (39"x24"x12") panel 适用 1000x600x300mm</i>		2K2PANEL <i>(39"x24"x12") 面板</i>
261	3kW/4.0hp <i>To fit 1000x600x300mm (39"x24"x12") panel 适用 1000x600x300mm</i>		3KPANEL <i>(39"x24"x12") 面板</i>
262	4kW/5.0hp <i>To fit 1000x600x300mm (39"x24"x12") panel 适用 1000x600x300mm</i>		4KPANEL <i>(39"x24"x12") 面板</i>
263	5.5kW/7.5hp <i>To fit 1000x600x300mm (39"x24"x12") panel 适用 1000x600x300mm</i>		5K5PANEL <i>(39"x24"x12") 面板</i>
264	7.5kW/10hp <i>To fit 1000x600x300mm (39"x24"x12") panel 适用 1000x600x300mm</i>		7K5PANEL <i>(39"x24"x12") 面板</i>
265	11kW/15hp <i>To fit 1200x600x400mm (47"x31"x16") panel 适用 1200x600x400mm</i>		11KPANEL <i>(47"x31"x16") 面板</i>
266	15kW/20hp <i>To fit 1600x600x400mm (63"x24"x16") panel 适用 1600x600x400mm</i>		15KPANEL <i>(63"x24"x16") 面板</i>
267	18.5kW/25hp <i>To fit 1600x600x400mm (39"x24"x16") panel 适用 1600x600x400mm</i>		18K5PANEL <i>(39"x24"x16") 面板</i>
268	22kW/30hp <i>To fit 1600x600x400mm (39"x24"x16") panel 适用 1600x600x400mm</i>		22KPANEL <i>(39"x24"x16") 面板</i>
269	30kW/40hp <i>To fit 1600x600x400mm (39"x24"x16") panel 适用 1600x600x400mm</i>		30KPANEL <i>(39"x24"x16") 面板</i>
270	37kW/50hp <i>To fit 1600x600x400mm (39"x24"x16") panel 适用 1600x600x400mm</i>		37KPANEL <i>(39"x24"x16") 面板</i>
271	45kW/60hp <i>To fit 1600x600x500mm (39"x24"x20") panel 适用 1600x600x400mm</i>		45KPANEL <i>(39"x24"x16") 面板</i>
272	55kW/75hp <i>To fit 1600x600x500mm (39"x24"x20") panel 适用 1600x600x400mm</i>		55KPANEL <i>(39"x24"x16") 面板</i>
273	75kW/100hp <i>To fit 1600x600x500mm (39"x24"x20") panel 适用 1600x600x400mm</i>		75KPANEL <i>(39"x24"x16") 面板</i>
274	90kW/125hp <i>To fit 1600x600x500mm (39"x24"x20") panel 适用 1600x600x400mm</i>		90KPANEL <i>(39"x24"x16") 面板</i>
<p><i>To be ordered in addition to a factory built control panel.</i> 除工厂造控制面板外还可以订购上述面板。</p> <p><i>Graphical Keypad, DC Link Chokes for Harmonic Suppression &amp; RFI Filters to meet Class C2 &amp; C1 are fitted as standard.</i> 图形键盘，直流电抗器谐波抑制和 RFI 滤波器满足 C2 和 C1 类配备标准。</p> <p><i>Price includes Danfoss Variable Speed Drive, Motor Protection Circuit Breaker, (to UL specifications) and increase in panel size from Autoflame standard panel sizes to allow for internal installation.</i> 价格包括 Danfoss 变速驱动器、电机保护断路器（UL 规格）；增加 Autoflame 标准面板尺寸用于内部安装。</p> <p><i>If externally mounted IP55/IP66 or 200/240V drives are required please contact Autoflame for more information.</i> 如要求外部安装 IP55/IP66 或 200/240V 驱动器，请联系 Autoflame 了解更多信息。</p>			

## 5.11 Danfoss Variable Speed Drives – Stand Alone

### Danfoss 变速驱动器-单机

Item No. 项目号	Danfoss Variable Speed Drives – Stand Alone Danfoss 变速驱动器-单机 VLT® HVAC IP20 Drive 380/480V 3 Phase, 50/60Hz VLT® HVAC IP20 驱动 380/480V 3 相, 50/60Hz	Kgs	Part No. 零件号
275	1.1kW/1.5hp		FC10P1K1T4
276	1.5kW/2.0hp		FC10P1K5T4
277	2.2kW/2.9hp		FC10P2K2T4
278	3kW/4.0hp		FC10P3K0T4
279	4kW/5.0hp		FC10P4K0T4
280	5.5kW/7.5hp		FC10P5K5T4
281	7.5kW/10hp		FC10P7K5T4
282	11kW/15hp		FC10P11KT4
283	15kW/20hp		FC10P15KT4
284	18.5kW/25hp		FC10P18KT4
285	22kW/30hp		FC10P22KT4
286	30kW/40hp		FC10P30KT4
287	37kW/50hp		FC10P37KT4
288	45kW/60hp		FC10P45KT4
289	55kW/75hp		FC10P55KT4
290	75kW/100hp		FC10P75KT4
291	90kW/125hp		FC10P90KT4
<p><i>Graphical Keypad, DC Link Chokes for Harmonic Suppression &amp; RFI Filters to meet Class C2 &amp; C1 are fitted as standard.</i> 图形键盘，直流电抗器谐波抑制和 RFI 滤波器满足 C2 和 C1 类配备标准。</p> <p><i>If externally mounted IP55/IP66 or 200/240V drives are required please contact Autoflame for more information.</i> 如要求外部安装 IP55/IP66 或 200/240V 驱动器，请联系 Autoflame 获得更多信息。</p>			

## 5.12 Direct Online Motor Starter 直接在线电机起动器

Item No.	Direct Online Motor Starter	Kgs	Part No.
项目号	直接在线电机起动器		零件号
292	1.1 - 7.5 kW / 1.5 - 10 hp <i>Can only be ordered with Autoflame panel 仅可与 Autoflame 控制面板一起订购</i>		DOL11/75
293	11kW / 15hp <i>Can only be ordered with Autoflame panel 仅可与 Autoflame 控制面板一起订购</i>		DOL11
294	15 kW / 20hp <i>Can only be ordered with Autoflame panel 仅可与 Autoflame 控制面板一起订购</i>		DOL15
295	18.5kW / 25hp <i>Can only be ordered with Autoflame panel 仅可与 Autoflame 控制面板一起订购</i>		DOL18
296	22 kW / 30hp <i>Can only be ordered with Autoflame panel 仅可与 Autoflame 控制面板一起订购</i>		DOL22
<p><i>Price includes UL compliant contactor, overload and Motor Protection Circuit Breaker. 价格包括 UL 标准接触器, 过载和电机保护断路器。</i></p> <p><i>Max 2 per standard panel- 800mm x 600mm x 300mm enclosure (31.4" x 23.6" x 11.8) Max 2 标准面板-800mm x 600mm x 300mm 外壳(31.4" x 23.6" x 11.8) Max 3 per standard large panel- 800mm x 600mm x 300mm enclosure (31.4" x 23.6" x 11.8") Max 3 标准面板- 800mm x 600mm x 300mm 外壳(31.4" x 23.6" x 11.8")</i></p> <p><i>For Star Delta or Soft Starts contact Autoflame for further information. 关于三角形启动或软启动请联系 Autoflame。</i></p>			

## 5.13 Direct Online Motor Starter 直接在线电机起动器

Item No.	Direct Online Motor Starter	Kgs	Part No.
项目号	直接在线电机起动器		零件号
297	1.1 - 7.5 kW / 1.5 - 10 hp <i>Can only be ordered with Autoflame panel 仅可与 Autoflame 控制面板一起订购</i>		DOLMCP11/75
298	11kW / 15hp <i>Can only be ordered with Autoflame panel 仅可与 Autoflame 控制面板一起订购</i>		DOLMCP11
299	15 kW / 20hp <i>Can only be ordered with Autoflame panel 仅可与 Autoflame 控制面板一起订购</i>		DOLMCP15
300	18.5kW / 25hp <i>Can only be ordered with Autoflame panel 仅可与 Autoflame 控制面板一起订购</i>		DOLMCP18
301	22 kW / 30hp <i>Can only be ordered with Autoflame panel 仅可与 Autoflame 控制面板一起订购</i>		DOLMCP22
<p><i>Price includes UL compliant contactor, overload and Motor Protection Circuit Breaker. 价格包括 UL 标准接触器, 过载和电机保护断路器。</i></p> <p><i>Max 2 up to 15kW (20hp) per standard panel- 800 x 600 x 300 mm enclosure (31.4" x 23.6" x 11.8"). 15kW (20hp) Max 2 标准面板- 800 x 600 x 300 mm 外壳 (31.4" x 23.6" x 11.8").</i></p> <p><i>Max 1 for 18.5 to 22kW (25 to 30 hp) or max 3 up to 15kW (20hp) per standard large panel- 800 x 800 x 300 mm enclosure (31.4" x 31.4" x 11.8"). 18.5 至 22kW (25 to 30 hp)Max 1 或 15kW (20hp) max 3 标准大面板-800 x 800 x 300 mm 外壳(31.4" x 31.4" x 11.8").</i></p> <p><i>Max 2 for 18.5 to 22kW (25 to 30hp) per extra large panel– 1000 x 800 x 300mm enclosure (39" x 31.4" x 11.8"). 18.5 至 22kW (25 to 30hp) Max 2 特大面板- 1000 x 800 x 300mm 外壳 (39" x 31.4" x 11.8").</i></p> <p><i>For Start Delta starters or soft starters contact Autoflame for further information. 关于三角形启动或软启动请联系 Autoflame。</i></p>			

### 5.14 VSD Bypass Switch – Single Fuel 变频驱动旁路开关-单燃料

Item No. 项目号	VSD By-pass Switch VSD 旁路开关	Kgs	Part No. 零件号
302	Single Fuel 1.1 - 7.5 kW / 1.5 - 10 hp 单燃料 <i>Can only be ordered with Autoflame panel 仅可与 Autoflame 控制面板一起订购</i>		CP1VSD11/75
303	Single Fuel 11 - 18.5 kW / 15 - 25 hp 单燃料 <i>Can only be ordered with Autoflame panel 仅可与 Autoflame 控制面板一起订购</i>		CP1VSD11/18
304	Single Fuel 15 kW / 20 hp 单燃料 <i>Can only be ordered with Autoflame panel 仅可与 Autoflame 控制面板一起订购</i>		CP1VSD15
305	Single Fuel 18.5 kW / 25 hp 单燃料 <i>Can only be ordered with Autoflame panel 仅可与 Autoflame 控制面板一起订购</i>		CP1VSD18
306	Single Fuel 22 kW / 30 hp 单燃料 <i>Can only be ordered with Autoflame panel 仅可与 Autoflame 控制面板一起订购</i>		CP1VSD22
307	Single Fuel 30 kW / 40 hp 单燃料 <i>Can only be ordered with Autoflame panel 仅可与 Autoflame 控制面板一起订购</i>		CP1VSD30
308	Single Fuel 37 kW / 50 hp 单燃料 <i>Can only be ordered with Autoflame panel 仅可与 Autoflame 控制面板一起订购</i>		CP1VSD37
309	Single Fuel 45 kW / 60 hp 单燃料 <i>Can only be ordered with Autoflame panel 仅可与 Autoflame 控制面板一起订购</i>		CP1VSD45
<p><i>Price includes UL compliant contactor (with overload), Motor Protection Circuit Breaker (to UL specifications), switch and Variable Speed Drive or direct fuel curve switching.</i> 价格包括 UL 标准接触器（带过载保护）、电机保护断路器（UL 规格）、开关和变速驱动或直接燃油曲线切换。</p> <p><i>Prices for larger kW(hp) drive switches are available on request. Please contact Autoflame for more information.</i> 按需要可提供大型 kW(hp) 驱动开关，请联系 Autoflame 了解价格和更多信息。</p>			

### 5.15 VSD Bypass Switch – Dual Fuel 变频驱动旁路开关-双燃料

Item No. 项目号	VSD By-pass Switch VDS 旁路开关	Kgs	Part No. 零件号
310	Dual Fuel 1.1 - 7.5 kW / 1.5 - 10 hp 双燃料 <i>Can only be ordered with Autoflame panel 仅可与 Autoflame 控制面板一起订购</i>		CP2VSD11/75
311	Dual Fuel 11 - 18.5 kW / 15 - 25 hp 双燃料 <i>Can only be ordered with Autoflame panel 仅可与 Autoflame 控制面板一起订购</i>		CP2VSD11/18
312	Dual Fuel 15 kW / 20 hp 双燃料 <i>Can only be ordered with Autoflame panel 仅可与 Autoflame 控制面板一起订购</i>		CP2VSD15
313	Dual Fuel 18.5 kW / 25 hp 双燃料 <i>Can only be ordered with Autoflame panel 仅可与 Autoflame 控制面板一起订购</i>		CP2VSD18
314	Dual Fuel 22 kW / 30 hp 双燃料 <i>Can only be ordered with Autoflame panel 仅可与 Autoflame 控制面板一起订购</i>		CP2VSD22
315	Dual Fuel 30 kW / 40 hp 双燃料 <i>Can only be ordered with Autoflame panel 仅可与 Autoflame 控制面板一起订购</i>		CP2VSD30
316	Dual Fuel 37 kW / 50 hp 双燃料 <i>Can only be ordered with Autoflame panel 仅可与 Autoflame 控制面板一起订购</i>		CP2VSD37
317	Dual Fuel 45 kW / 60 hp 双燃料 <i>Can only be ordered with Autoflame panel 仅可与 Autoflame 控制面板一起订购</i>		CP2VSD45
<p><i>Price includes UL compliant contactor (with overload), Motor Protection Circuit Breaker (to UL specifications) and switches.</i> 价格包括 UL 标准接触器（带过载保护）、电机保护断路器（UL 规格）和开关。</p> <p><i>Prices for larger kW(hp) drive switches are available on request. Please contact Autoflame for more information.</i> 按需要可提供大型 kW(hp) 驱动开关，请联系 Autoflame 了解价格和更多信息。</p>			

## 5.16 M.M. System Spares 微型模块系统备件

Item No.	M.M. System Spares	Kgs	Part No.
项目号	微型模块系统备件		零件号
318	Mk7 M.M. Software* Mk7 微型控制模块软件 Includes 2 EPROMS and display SD card 包括 2 个 EPROMS 和显示 SD 卡	0.30	MK7PROMS
319	Mk7 M.M. Software with WLC M.M. software* Includes 3 EPROMS and display SD card Mk7 微型控制模块软件 和 WLC M.M.软件 带 3 个 EPROMS 和显示 SD 卡	0.40	MK7PROMS/WL
320	Mk7 or Mk6 M.M. Connector Plugs Set of 9 Mk7 或 Mk6 微型控制模块连接器插头 9 套	0.50	CON1060
321	Mini Mk6 M.M. Connector Plugs Set of 7 Mk6 微型控制模块连接器插头 7 套	0.50	CON1064
322	Mini Mk5 Evolution M.M. Connector Plugs Set of 3 Mk5 Evolution 微型控制模块连接器插头 3 套	0.50	CON1069
323	Mini Mk7 Evolution M.M. Connector Plugs Set of 7 Mk7 Evolution 微型控制模块连接器插头 7 套	0.50	CON1070
324	M.M. Enclosure Mounting Clamps Set of 4 微型控制模块外壳安装夹具 4 套	0.10	ENC10061
325	M.M. Expansion PCB Enclosure + Pillars 微型控制模块 PCB 扩展外壳+支架	0.20	ENC10065
326	Expansion PCB Control Connector Plugs Set of 5 PCB 扩展控制连接器插头 5 套	0.50	CON1068
327	2A (T) Fuse 2A (T)保险丝 Set of 10 10 套	0.10	FU10034
328	6.3A (T) Fuse 6.3A (T) 保险丝 Set of 10- Mk7, Mini Mk6 and Mk6 only 10 套-仅用于 Mk7、Mk6 微型控制模块和 Mk6	0.10	FU10026
329	(TE5) 2A (T) Fuse (TE5) 2A (T)保险丝 Set of 10- Mini Mk6 and Mk6 only 10 套-仅用于 Mk6 微型控制模块和 Mk6	0.10	FU10027
330	(TE5) 630 mA (T) Fuse (TE5) 630 mA (T)保险丝 Set of 10- Mini Mk6 and Mk6 only 10 套-仅用于 Mk6 微型控制模块和 Mk6	0.10	FU10028
331	(TE5) 0.315A (T) Fuse (TE5) 0.315A (T)保险丝 Set of 10- mini Mk5 EVO only 10 套-仅用于 Mk5 EVO 微型控制模块	0.10	FU10024
332	5A (T) Fuse 5A (T)保险丝 Set of 10- Mini Mk8, Mini Mk7 and Mini Mk5 EVO only 10 套-仅用于 Mk8、Mk7 和 Mk5 EVO 微型控制模块	0.10	FU10035
333	630 mA (T) Fuse 630 mA (T)保险丝 Set of 10- Mini Mk5 only 10 套-仅用于 Mk5 微型控制模块	0.10	FU10025
334	125 mA (220V) Fuse 125 mA (220V)保险丝 Set of 10- Mk5 only 10 套-仅用于 Mk5	0.10	FU10022
335	250 mA (110V) Fuse 250 mA (110V)保险丝 Set of 10- Mk5 only 10 套-仅用于 Mk5	0.10	FU10023
336	500 mA (T) Fuse 500 mA (T) 保险丝 Set of 10 Mk 7 10 套-仅用于 Mk7	0.10	FU10040
337	1A (T) Fuse 1A (T) 保险丝 Set of 10 Mk 7 10 套-仅用于 Mk7	0.10	FU10041
338	2.5A (T) Fuse 2.5A (T) 保险丝 Set of 10 Mk 7 10 套-仅用于 Mk7	0.10	FU10042
<p><i>*To ensure correct software is sent, please specify unit serial number.</i>            为确保提供正确的软件，请说明备件序列号。</p>			



## 5.17 Mk8 E.G.A. System Spares MK8 尾气分析仪系统备件

Item No. 项目号	Mk7 E.G.A. System Spares Mk7 尾气分析仪系统备件	Kgs	Part No. 零件号
339	Mk8 O2 Sensor Mk8 O2 传感器 For the Mk8 E.G.A. 用于 Mk8 尾气分析仪	0.02	SP80004
340	Mk8 CO2 Sensor Mk8 CO2 传感器 Can be fitted by factory trained personnel 可以由厂家经培训的人员安装	0.09	SP80005
341	Mk8 NO Sensor Mk8 NO 传感器 For the Mk8 E.G.A. 用于 Mk8 尾气分析仪	0.04	SP80007
342	Mk8 CO Sensor Mk8 CO 传感器 For the Mk8 E.G.A. 用于 Mk8 尾气分析仪	0.04	SP80008
343	Mk8 SO2 Sensor Mk8 SO2 传感器 For the Mk8 E.G.A. 用于 Mk8 尾气分析仪	0.01	SP80013
344	Mk8 NO2 Sensor Mk8 NO2 传感器 For the Mk8 E.G.A. 用于 Mk8 尾气分析仪	0.04	SP80037
345	Mk8 E.G.A. Replacement Air Inlet Filter Mk8 尾气分析仪进气过滤器 For the Mk8 E.G.A. 用于 Mk8 尾气分析仪	0.06	EGA80107
346	Mk8 E.G.A. Fan Mk8 尾气分析仪风机 For the Mk8 E.G.A. 用于 Mk8 尾气分析仪	0.10	SP10035/8
347	E.G.A. Fuse 尾气分析仪保险丝 For the Mk8, Mk7 and Mk6 E.G.A. 用于 Mk8、Mk7 和 Mk6 尾气分析仪	0.10	SP1040
348	E.G.A. Pump 24V 尾气分析仪泵 24V For the Mk8, Mk7 and Mk6 E.G.A. 用于 Mk8、Mk7 和 Mk6 尾气分析仪	0.33	SP70010
349	E.G.A. Replacement Internal Filter 尾气分析仪内部过滤器 For the Mk8, Mk7 and Mk6 E.G.A. 用于 Mk8、Mk7 和 Mk6 尾气分析仪	0.06	SP10011
350	E.G.A. Type K Thermocouple only 尾气分析仪 K 型热电偶 3m (10ft) cable length 3m (10ft) 电缆长	0.25	SP1044
351	E.G.A. Type K Thermocouple only 尾气分析仪 K 型热电偶 5m (16ft) cable length 5m (16ft) 电缆长	0.25	SP1044/5
352	E.G.A. Type K Thermocouple only 尾气分析仪 K 型热电偶 10m (33ft) cable length 10m (33ft) 电缆长	0.25	SP1044/10
353	Mk8 E.G.A. Mains & Data Flying Leads Mk8 尾气分析仪电源和数据飞线 For the Mk8 E.G.A. 用于 Mk8 尾气分析仪		CON8010
354	E.G.A. Replacement Sampling Probe Filter & Tubing For the Mk8 and Mk7 E.G.A. Probe, 3m (10ft) 尾气分析仪采样探头过滤器和管道 用于 Mk8 和 Mk7 尾气分析仪探头, 3m (10ft)	0.15	SP70012

## 5.18 Mk7 E.G.A. System Spares Mk7 尾气分析仪系统备件

Item No.	Mk7 E.G.A. System Spares	Kgs	Part No.
项目号	Mk7 尾气分析仪系统备件		零件号
355	Mk7 E.G.A. Software* Mk7 尾气分析仪软件 <i>Includes 1 EPROM and display SD card 包括 1 个 EPROM 和显示 SD 卡</i>	0.20	MK7EGAPROMS
356	Mk7 E.G.A. CEMS Software Upgrade** <i>E.G.A. must be returned to Autoflame for CEMS upgrade</i> Mk7 尾气分析仪 CEMS 软件更新 尾气分析仪必须返还 Autoflame 进行 CEMS 更新	0.01	MK7EGACEMS
357	Mk7 O2 Sensor Mk7 O2 传感器 <i>For the Mk7 E.G.A. 用于 Mk7 尾气分析仪</i>	0.02	SP70004
358	Mk7 CO2 Sensor Mk7 CO2 传感器 <i>Mk7 E.G.A. must be returned for this part to be changed.</i> Mk7 尾气分析仪必须返还进行本部件更换	0.09	SP70005
359	Mk7 NO Sensor Mk7 NO 传感器 <i>For the Mk7 E.G.A. 用于 Mk7 尾气分析仪</i>	0.04	SP70007
360	Mk7 CO Sensor Mk7 CO 传感器 <i>For the Mk7 E.G.A. 用于 Mk7 尾气分析仪</i>	0.04	SP70008
361	Mk7 SO2 Sensor Mk7 SO2 传感器 <i>For the Mk7 E.G.A. 用于 Mk7 尾气分析仪</i>	0.01	SP70013
362	Mk7 NO2 Sensor Mk7 NO2 传感器 <i>For the Mk7 E.G.A. 用于 Mk7 尾气分析仪</i>	0.04	SP70037
363	Mk7 E.G.A. Replacement Air Inlet Filter <i>For the Mk7 E.G.A.</i> Mk7 尾气分析仪进气口过滤器 用于 Mk7 尾气分析仪	0.06	EGA70107
364	Mk7 E.G.A. Replacement RH Sensor <i>For the Mk7 E.G.A.</i> Mk7 尾气分析仪相对湿度传感器 用于 Mk7 尾气分析仪	0.10	SP70040
365	Mk7 E.G.A. Fan Mk7 尾气分析仪风机 <i>For the Mk7 E.G.A., For Mk6 E.G.A. Fan Part No SP10035</i> 用于 Mk7 和 Mk6 尾气分析仪, 风机零件号 SP10035	0.10	SP10035/7
366	E.G.A. Fuse 尾气分析仪保险丝 <i>For the Mk8, Mk7 and Mk6 E.G.A. 用于 Mk8, Mk7 和 Mk6 尾气分析仪</i>	0.10	SP1040
367	E.G.A. Pump 24V 尾气分析仪泵 24V <i>For the Mk8, Mk7 and Mk6 E.G.A. 用于 Mk8, Mk7 和 Mk6 尾气分析仪</i>	0.33	SP70010
368	E.G.A. Replacement Internal Filter 尾气分析仪内部过滤器 <i>For the Mk8, Mk7 and Mk6 E.G.A. 用于 Mk8, Mk7 和 Mk6 尾气分析仪</i>	0.06	SP10011
369	E.G.A. Type K Thermocouple only 尾气分析仪 k 型热电偶 <i>3m (10ft) cable length 3m (10ft) 电缆长</i>	0.25	SP1044
370	E.G.A. Type K Thermocouple only 尾气分析仪 k 型热电偶 <i>5m (16ft) cable length 5m (16ft) 电缆长</i>	0.25	SP1044/5
371	E.G.A. Type K Thermocouple only 尾气分析仪 k 型热电偶 <i>10m (33ft) cable length 10m (33ft) 电缆长</i>	0.25	SP1044/10
372	E.G.A. Connector Plugs 尾气分析仪连接器插头 <i>16 poles 1 set of 2 plugs (For the Mk7 and Mk6 E.G.A.)</i> 16 极 2 插头 1 套 (用于 Mk7 和 Mk6 尾气分析仪)	0.50	CON1010
373	E.G.A. Replacement Sampling Probe Filter & Tubing <i>For the Mk8 and Mk7 E.G.A. Probe, 3m (10ft)</i> 尾气分析仪采样探头过滤器和管道 用于 Mk8 和 Mk7 尾气分析仪探头, 3m (10ft)	0.15	SP70012
<p>* To ensure correct software is sent, please specify unit serial number. 为确保提供正确的软件, 请说明备件序列号。</p> <p>** Please note that if you request to have your Standard E.G.A. upgraded to include CEMS software it is compulsory that a standard service and calibration is carried out. 请注明更新标准尾气分析仪时是否包括 CEMS 软件, 因为标准服务和校准包括强制性软件更新。</p>			

## 5.19 Mk6 E.G.A. System Spares Mk6 尾气分析仪系统备件

Item No. 项目号	Mk6 E.G.A. System Spares Mk6 尾气分析仪系统备件	Kgs	Part No. 零件号
374	E.G.A. Replacement Mk6 Sampling Probe Filter & Tubing <i>For the Mk6 E.G.A. Probe, 3m(10ft)</i> 尾气分析仪 Mk6 采样探头过滤器和管道 用于 Mk6 尾气分析仪探头, 3m(10ft)	0.15	SP10012
375	Mk6 O2 Sensor to be supplied without cell holder <i>Mk6 E.G.A. cell holders will be recycled if returned to Autoflame</i> 提供的 Mk6 O2 传感器不包括零件支架 Mk6 尾气分析仪零件支架返还 <i>Autoflame</i> 后将被再次使用	0.02	SP10004
376	Mk6 CO2 Sensor Mk6 CO2 传感器 <i>For the Mk6 E.G.A.(only Mk6 CO2 sensor) 用于 Mk6 尾气分析仪 (仅用于 Mk6 CO2 传感器)</i>	0.09	SP70006
377	Mk6 CO2 Sensor Conversion Kit Mk6 CO2 传感器转换组件 <i>For the Mk6 E.G.A., include CO2 cell and kit to upgrade 用于 Mk6 尾气分析仪, 包括 CO2 电池和升级组件</i>	0.10	SP70006/KIT
378	Mk6 NO Sensor Mk6 NO 传感器 <i>For the Mk6 E.G.A. 用于 Mk6 尾气分析仪</i>	0.04	SP10007
379	Mk6 CO Sensor Mk6 CO 传感器 <i>For the Mk6 E.G.A. 用于 Mk6 尾气分析仪</i>	0.04	SP10008
380	Mk6 SO2 Sensor Mk6 SO2 传感器 <i>For the Mk6 E.G.A. 用于 Mk6 尾气分析仪</i>	0.01	SP10013
381	Mk6 NO2 Sensor Mk6 NO2 传感器 <i>For the Mk6 E.G.A. 用于 Mk6 尾气分析仪</i>	0.04	SP10037
382	Mk6 E.G.A. Replacement Air Inlet Filter <i>For the Mk6 E.G.A.</i> Mk6 尾气分析仪进气口过滤器 用于 Mk6 尾气分析仪	0.06	SP10018

## 5.20 O2 Interface Modules O2 接口模块

Item No. 项目号	O2 Interface Modules O2 接口模块	Kgs	Part No. 零件号
383	O2 Interface Module, 230V O2 接口模块, 230V	0.65	MM10013
384	O2 Interface Module, 110V O2 接口模块, 110V	0.65	MM10013/110
385	Mk8 O2 Interface Module (Universal Voltage, 110V/230V) <i>For use with Mini Mk8 M.M. and Mk8 MM</i> Mk8 O2 接口模块 (通用电压, 110V/230V) 用于 Mk8 微型控制模块和 Mk8 控制模块	0.65	MM88002

## 5.21 D.T.I. System Spares 数据传输接口系统备件

Item No. 项目号	D.T.I. System Spares 数据传输接口系统备件	Kgs	Part No. 零件号
386	Mk6 D.T.I. Fuse Mk6 数据传输接口保险丝	0.10	SP1060
387	Mk7 and Mk6 D.T.I. Connector Plugs set of 6 Mk7 和 Mk6 数据传输接口连接器插头 6 套	0.50	CON1065
388	Digital I/O Connector Plugs 数字输入输出连接器插头	0.50	CON1066
389	Analogue I/O Connector Plugs 模拟输入输出连接器插头	0.50	CON1067
390	Universal I/O Connector Plugs 通用输入输出连接器插头	0.50	CON7066

## 5.22 Sundries and Spare Parts 杂项和备件

Item No. 项目号	Sundries and Spare Parts 杂项和备件	Kgs	Part No. 零件号
391	Autoflame M.M./E.G.A. Sales Brochure <i>US/Letter Format</i> Autoflame 控制模块/尾气分析仪销售手册 美国/信件格式	0.10	SP2000/US
392	Tamper Proof Screwdriver 防撬螺丝刀 <i>Setting up servo motors 设置伺服电机</i>	0.07	SP10002
393	63VA Transformer, 230-24V 63VA 变压器, 230-24V <i>UK specification for servo motors 伺服电机英国规范</i>	0.65	SP10003
394	63VA Transformer, 110-24V 63VA 变压器 110-24V <i>USA specification for servo motors 伺服电机美国规范</i>	0.65	SP10003/110
395	Ferrite Core Set 铁氧体磁芯 <i>3 off</i>	0.22	SU10010
396	Anti Voltage Surge Module, 230V 防电压浪涌模块	0.15	SU10011
397	Anti Voltage Surge Module, 110V 防电压浪涌模块	0.15	SU10011/110
398	Electrical Snubber, 230V* 电减振器 <i>Type reference must be shown on purchase order</i> 采购订单必须注明类型	0.05	SU10030
399	Electrical Snubber, 110V* 电减振器 <i>Type reference must be shown on purchase order</i> 采购订单必须注明类型	0.05	SU10040
<i>*Please contact Autoflame for a type reference prior to ordering.</i> 订购前请联系 Autoflame 了解类型。			

## 5.23 Servo Motor Spares 伺服电机备件

Item No. 项目号	Servo Motor Spares 伺服电机备件	Kgs	Part No. 零件号
400	Small Servo Motor Fixing Screws 小型伺服电机固定螺丝 <i>M5 x 35mm, set 4 4套</i>	0.01	F5015
401	Small Servo Motor Mounting Bracket/Coupling <i>Retrofit application for burner air damper</i> 小型伺服电机安装支架和耦合器 燃烧器空气阻尼器的改造应用	0.50	SP10015
402	Small Valve to Large Servo Motor Mounting Coupling <i>Gas valve only applications</i> 大型伺服电机安装耦合用小型阀 仅适用燃气阀	0.50	SP10017
403	Large Servo Motor Fixing Screws 大型伺服电机固定螺丝 <i>M6 x 45mm, set 4 4套</i>	0.01	F6015
404	Large Servo Motor Mounting Bracket/Coupling <i>Retrofit application for burner air damper</i> 大型伺服电机安装支架和耦合器 燃烧器空气阻尼器的改造应用	0.50	SP10016
405	Industrial Servo Motor 05 Mounting Bracket/Coupling <i>For MM10070</i> 工业伺服电机 05 安装支架和耦合器	0.80	SP10028/05
406	Industrial Servo Motor 10 Mounting Bracket/Coupling <i>For MM10072</i> 工业伺服电机 10 安装支架和耦合器	0.80	SP10028/10
407	Industrial Servo Motor 20/40 Mounting Bracket/Coupling <i>For MM10074/B &amp; MM10078</i> 工业伺服电机 20/40 安装支架和耦合器	1.00	SP10028/20
408	Solid State Relay Module 固态继电器模块 <i>Used in conjunction with a Unic 20/40 Motor 与 Unic 20/40 电机搭配使用</i>	1.00	MM10070/RK

## 5.24 Oil Valve Spares 油阀备件

Item No. 项目号	Oil Valve Spares 油阀备件	Kgs	Part No. 零件号
409	Viton O-ring Type 1,2,5,6,8,9 Small Oil Valve <i>Set of 2</i> VitonO 型圈形 1,2,5,6,8,9 小型油阀 2 套	0.01	OR70003
410	Viton O-ring Type 3,4,7 Large Oil Valve <i>Set of 2</i> VitonO 型圈形 3,4,7 大型油阀 2 套	0.01	OR70004
*These can only be installed by approved by Autoflame Tech Centre engineers. 仅可由 Autoflame Tech Centre 的工程师进行安装。			

## 5.25 Water Level Spares 水位备件

Item No. 项目号	Water Level Spares 水位备件	Kgs	Part No. 零件号
411	0.5" Feedwater Valve Repair Kit 0.5"给水阀修理组件 <i>Replacement parts for New Style feedwater valve fitted with Tekfil seats 新型给水阀替换件配 Tekfil 底座</i>		WLCV015/KIT
412	0.75" Feedwater Valve Repair Kit 0.75"给水阀修理组件 <i>Replacement parts for New Style feedwater valve fitted with Tekfil seats 新型给水阀替换件配 Tekfil 底座</i>		WLCV020/KIT
413	1" Feedwater Valve Repair Kit 1"给水阀修理组件 <i>Replacement parts for New Style feedwater valve fitted with Tekfil seats 新型给水阀替换件配 Tekfil 底座</i>		WLCV025/KIT
414	1.5" Feedwater Valve Repair Kit 1.5"给水阀修理组件 <i>Replacement parts for New Style feedwater valve fitted with Tekfil seats 新型给水阀替换件配 Tekfil 底座</i>		WLCV040/KIT
415	2" Feedwater Valve Repair Kit 给水阀修理组件 <i>Replacement parts for New Style feedwater valve fitted with Tekfil seats 新型给水阀替换件配 Tekfil 底座</i>		WLCV050/KIT
416	Water Level Probes Flying Leads 水位探头飞线 <i>Replacement flying leads for water level probes, 2m(6ft) 水位探头替换飞线</i>		WLCPLEAD
417	Mounting Bracket & Coupling for 0.5", 0.75" Feedwater valve <i>Includes fixing screws &amp; washers</i> 0.5", 0.75"给水阀安装支架和耦合器 包括固定螺丝和垫圈		SP30011
418	Mounting Bracket & Coupling for 1" PN40 Feedwater valve <i>Includes fixing screws &amp; washers</i> 1" PN40 给水阀安装支架和耦合器 包括固定螺丝和垫圈		SP30012
419	Mounting Bracket & Coupling for 1.5" PN40 Feedwater valve <i>Includes fixing screws &amp; washers</i> 1.5" PN40 给水阀安装支架和耦合器 包括固定螺丝和垫圈		SP30013
420	Mounting Bracket & Coupling for 2" PN40 Feedwater valve <i>Includes fixing screws &amp; washers</i> 2" PN40 给水阀安装支架和耦合器 包括固定螺丝和垫圈		SP30014
421	Mounting Bracket & Coupling for 1" ANSI 300lb Feedwater valve <i>Includes fixing screws &amp; washers</i> 1" ANSI 300lb 给水阀安装支架和耦合器 包括固定螺丝和垫圈		SP30012/U

## 5 Peripheral &amp; Spare Parts 周边设备和备件

Item No. 项目号	Water Level Spares 水位备件	Kgs	Part No. 零件号
422	Mounting Bracket & Coupling for 1.5" ANSI 300lb Feedwater valve <i>Includes fixing screws &amp; washers</i> 1.5" ANSI 300lb 给水阀安装支架和耦合器 包括固定螺丝和垫圈		SP30013/U
423	Mounting Bracket & Coupling for 2" ANSI 300lb Feedwater valve <i>Includes fixing screws &amp; washers</i> 2" ANSI 300lb 给水阀安装支架和耦合器 包括固定螺丝和垫圈		SP30014/U

## 5.26 CB Gears Drive Assembly CB 齿轮传动装置

Item No. 项目号	CB Gears Drive Assembly CB 齿轮传动装置	Kgs	Part No. 零件号
424	Gear Drive Assembly 齿轮传动装置 96" 400-800hp, Shaft diameter 3.23" 96" 400-800hp, 轴径 3.23"		MMGR001
425	Gear Drive Assembly 齿轮传动装置 96" 400-800hp, Shaft diameter 2.988" 96" 400-800hp, 轴径 2.988"		MMGR002
426	Gear Drive Assembly 齿轮传动装置 78" 250-350hp, Shaft diameter 2.4750" 78" 250-350hp, 轴径 2.4750"		MMGR003
427	Gear Drive Assembly 齿轮传动装置 60" 50-200hp, Shaft diameter 2.3745" 60" 50-200hp, 轴径 2.3745"		MMGR004

## 5.27 Cables 电缆

Item No. 项目号	Cables 电缆	Kgs	Part No. 零件号
428	Screened Cable 1 core 1 芯屏蔽电缆 16-02-1C	5.00	CAB50001
429	Screened Cable 2 core 2 芯屏蔽电缆 16-02-2C	5.00	CAB50002
430	Screened Cable 3 core 3 芯屏蔽电缆 16-02-3C	5.00	CAB50003
431	Screened Cable 4 core 4 芯屏蔽电缆 16-02-4C	5.00	CAB50004
432	Screened Cable 6 core 6 芯屏蔽电缆 16-02-6C	5.00	CAB50006
433	Screened Cable 8 core 8 芯屏蔽电缆 16-02-8C	5.00	CAB50008
434	Screened Cable 10 core 10 芯屏蔽电缆 16-02-10C	5.00	CAB50010
435	Screened Data Cable 1 pair 1 对屏蔽数据电缆	5.00	CAB50020
<i>Prices per 100m 每 100m 价格</i>			

## 5.28 Relays 继电器

Item No. 项目号	Relays 继电器	Kgs	Part No. 零件号
436	Relay LY2 12V DC LY2 12V DC 继电器	0.04	EC50200
437	Relay Base 12V 12V 继电器底座	0.05	EC50201
438	Relay MY 240V AC MY 240V AC 继电器	0.04	EC50206
439	Relay Base 240V 240V 继电器底座	0.05	EC50207

### 5.29 Demo/Test Equipment 演示/测试设备

Item No. 项目号	Demo/Test Equipment 演示/测试设备	Kgs	Part No. 零件号
440	Mk7 M.M Water Level Demo Case 230V <i>Includes Water Level Control and First Out Annunciation</i> Mk7 控制模块水位演示盒 230V 包括水位控制和点火控制器	13.00	MM10035/WL
441	Mk7 M.M. Water Level Demo Case 110V <i>Includes Water Level Control and First Out Annunciation</i> Mk7 控制模块水位演示盒 110V 包括水位控制和点火控制器	13.00	MM10035/110
442	Upgrading Mk6 to Mk7 Demo Case <i>Includes Mk7 and all work needed</i> Mk6 至 Mk7 更新演示盒 包括 Mk7 和所有所需工作	13.00	REPAIRDEMO
443	Mini Mk8 M.M. Demo Case, 230V <i>Includes Autoflame internal flame safeguard controller</i> Mk8 微型控制模块演示盒, 230V, 包括 Autoflame 内部火焰防护控制器	9.00	MM10036
444	Mini Mk8 M.M. Demo Case, 120V <i>Includes Autoflame internal flame safeguard controller</i> Mk8 微型控制模块演示盒, 120V, 包括 Autoflame 内部火焰防护控制器	9.00	MM10036/110
445	D.T.I. Demo Case, 230V 数据传输接口演示盒 230V <i>Includes Analogue and Digital I/O 包括模拟和数字输入输出</i>	12.00	MM10027
446	D.T.I. Demo Case, 120V 数据传输接口演示盒 120V <i>Includes Analogue and Digital I/O 包括模拟和数字输入输出</i>	12.00	MM10027/110

### 5.30 Engineering Services 工程服务

Item No. 项目号	Engineering Services 工程服务	Kgs	Part No. 零件号
447	Combustion Efficiency Audit 燃烧效率审查 <i>Per Boiler Plant 每个锅炉厂</i>		
448	Engineering Consultancy 工程咨询 <i>Daily Rate 日常</i>		
<p><i>Audit includes review of boiler plant, report outlining efficiency calculations and recommendations. Pricing allows for one day on site reviewing boiler plant, and does not include travel expenses which would be charged at cost. Final scope to be agreed prior to audit.</i> 审查包括锅炉厂的检查, 报告概述效率计算和建议。价格包括一天的锅炉厂现场检查, 不包括差旅费用, 该费用将按成本收费。审查前应就最终范围达成一致。</p> <p><i>Scope of consultancy work to be agreed and documented prior to engagement. Expert capabilities include boiler plant design, control system design, burner design recommendations.</i> 事先就咨询范围达成一致并记录在案。专家咨询包括锅炉厂设计、控制系统设计、燃烧器设计建议。</p> <p><i>For more information please contact Autoflame. 更多信息请联系 Autoflame.</i></p>			

### 5.31 Technical Manual & Product Catalogue 技术手册和产品目录

Item No. 项目号	Technical Manual & Product Catalogue 技术手册和产品目录	Kgs	Part No. 零件号
449	Complete Volume Set of Technical Manuals 成套技术手册 <i>Consisting of TECHMAN2 – 13 包括 TECHMAN2 – 13</i>		TECHMAN1
450	Mk7 M.M. Installation and Commissioning Guide Mk7 控制模块安装和调试指南		TECHMAN2
451	Mini Mk8 M.M. Installation and Commissioning Guide Mk8 微型控制模块安装和调试指南		TECHMAN3
452	M.M. Application Possibilities 控制模块的应用		TECHMAN4
453	Valves and Servomotors 阀门和伺服电机		TECHMAN5
454	Mk8 E.G.A. Set-Up and Trim Guide Mk8 尾气分析仪设置和维修指南		TECHMAN6
455	Expansion Board Set-Up Guide 扩展板设置指南		TECHMAN8
456	Mk7 D.T.I. Set-Up Guide Mk7 数据传输接口设置指南		TECHMAN9
457	Mk7 M.M. End User Guide Mk7 控制模块终端用户指南		TECHMAN10
458	Mini Mk8 M.M. End User Guide Mk8 微型控制模块终端用户指南		TECHMAN11
459	Expansion Board End User Guide 扩展板终端用户指南		TECHMAN12
460	Product Catalogue 产品目录		TECHMAN13

## 6 Repairs 维修

### 6.1 Standard Repair Prices 标准维修价格

Item No. 项目号	Standard Repair Prices 标准维修价格	Kgs	Part No. 零件号
461	Repair Internal E.G.A. Filter 维修内部尾气分析仪过滤器 SP10011	0.06	REPAIRSP10011
462	Repair Water Level Feed Water Valve 维修水位给水阀 WLCV	7.00	REPAIRWLCV
463	Repair Water Level Capacitance Probe 维修水位电容探头 WLCP500, WLCP750, WLCP1000, WLCP1250, WLCP1500	1.50	REPAIRWLCP
464	Repair TDS 维修 TDS TDS60001, TDS60001/110	3.00	REPAIRTDS
465	Repair Thermocouple 维修热电偶 SP1004	0.25	REPAIRT-COUPLE
466	Repair Mini Mk5 Evolution M.M. Module MMM5002/E, MMM5002/E/110 维修 Mk5 Evolution 微型控制模块	2.50	REPAIRMMM5002/E
467	Repair Mini Mk7 Evolution M.M. Module MMM7002/E, MMM7002/E/110 维修 Mk7 Evolution 微型控制模块	2.50	REPAIRMMM7002/E
468	Repair Mini Mk8 M.M. Module 维修 Mk8 微型控制模块 MMM8002	2.50	REPAIRMMM8002
469	Repair Mk7 M.M. Module 维修 Mk7 控制模块 MM70001/E, MM70001/E/WL	3.50	REPAIRMK7
470	Repair Mk6 M.M. Module 维修 Mk6 控制模块 MM60001, MM60001/110, MM60001/E, MM60001/E/110	3.50	REPAIRMK6
471	Repair Mini Mk6 M.M. Module 维修 Mk6 微型控制模块 MMM60016, MMM60016/110, MMM60016/IR	3.50	REPAIRMMM60016
472	Repair Mk5 M.M. Module 维修 Mk5 控制模块 MM50001, MM50001/110, MM50001/B, MM50001/B110	3.20	REPAIR5
473	Repair Mini Mk5 M.M. Module/ 3 Ch Mini MM Module MMM50016, MMM50016/IR (230V, 110V) 维修 Mk5 微型控制模块/3 Ch 微型控制模块	3.50	REPAIRMMM50016
474	Repair M.M. Infrared Upload/Download Lead MM60010 维修控制模块红外上传下载导线	0.13	REPAIR6010



## 6 Repairs 维修

Item No. 项目号	Standard Repair Prices 标准维修价格	Kgs	Part No. 零件号
475	Repair Inverter Interface Module 维修交换器接口模块 MM10011, MM10011/110	0.65	REPAIR11
476	Repair E.G.A. Sampling Unit Mk6 Sampling System MM60002, MM60002/110 Service & calibration only - excluding parts 维修尾气分析仪采样部件 Mk6 采样系统 仅用于 MM60002, MM60002/110 服务和校准-不包括零件	11.00	REPAIREGA6
477	Repair E.G.A. Sampling Unit Mk7 Sampling System MM72004, MM70004 Service & calibration- excluding parts 维修尾气分析仪采样部件 Mk7 采样系统 仅用于 MM72004, MM70004 服务和校准-不包括零件	11.00	REPAIREGA7
478	Repair E.G.A. Sampling Unit Mk8 Sampling System MM82004 Service & calibration- excluding parts 维修尾气分析仪采样部件 Mk8 采样系统 仅用于 MM82004 服务和校准-不包括零件	11.00	REPAIREGA8
479	Repair E.G.A. Mk5 Sampling System MM10002 - Service & calibration only - excluding parts 维修尾气分析仪 Mk5 采样系统 仅用于 MM10002 服务和校准-不包括零件	11.00	REPAIR1002
480	Repair E.G.A. Sampling Probe 维修尾气分析仪采样探头 MM10033, MM10003, EGA20002	1.00	REPAIR1003
481	Repair E.G.A. Cell O2/CO/CO2/SO2/NO 维修尾气分析仪 O2/CO/CO2/SO2/NO SP10004, SP10005, SP10007, SP10008, SP10013	0.50	REPAIREGACELL
482	Repair Mk6, Mk7, Mk8 E.G.A. Pump 24V SP10010 维修 Mk6, Mk7, Mk8 尾气分析仪泵 24V	0.33	REPAIRSP10010
483	Repair Small Servo Motor 维修小型伺服电机 MM10005, MM10005/B, MM10005/D	0.55	REPAIR1005
484	Repair Large Servo Motor 维修大型伺服电机 MM10004, MM10004/D, MM10004/EXP, M10004/D/EXP	1.85	REPAIR1004
485	Repair Industrial Servo Motor 05 维修工业伺服电机 05 MM10070, MM10070/110	4.00	REPAIR1070
486	Repair Industrial Servo Motor 10 维修工业伺服电机 10 MM10072, MM10072/110	4.00	REPAIR1072
487	Repair Industrial Servo Motor 20 维修工业伺服电机 20 MM100074, MM10074/B, MM10074/B/110	6.00	REPAIR1074
488	Repair Industrial Servo Motor 40 维修工业伺服电机 40 MM10078, MM10078/110	8.00	REPAIR1078
489	Repair/Test Oil Valve 维修/测试油阀 Any oil valve - please quote number	2.00	REPAIROVALVE
490	Repair/Test Gas Valve 维修/测试燃气阀 Any gas valve - please quote number	2.00	REPAIRGVALVE
491	Repair and Test Temperature Load Detector 维修测试温度负荷检测器 MM10006/100/150/200/250/400	0.45	REPAIR1006
492	Repair and Test Pressure Load Detector 维修测试压力负荷检测器 MM10008, MM10008U	0.21	REPAIR1008
493	Repair and Test Pressure Load Detector 维修测试压力负荷检测器 MM10009, MM10009U	0.21	REPAIR1009
494	Repair and Test Pressure Load Detector MM10010, MM10010U 维修测试压力负荷检测器	0.21	REPAIR1010
495	Repair Self Check UV Scanner 维修自检紫外线扫描仪 MM60003/HS, MM60003/HS/SV	0.80	REPAIR6003

## 6 Repairs 维修

Item No. 项目号	Standard Repair Prices 标准维修价格	Kgs	Part No. 零件号
496	Repair Self Check IR Scanner 维修自检红外线扫描仪 MM60016, MM70017	0.80	REPAIRIR
497	Repair High Sensitivity Self Check UV Scanner MM60003/HS 维修高灵敏度自检紫外线扫描仪	0.80	REPAIR6003/HS
498	Repair UV Scanner 维修 UV 扫描仪 MM60004, MM60004/U	0.20	REPAIR6004
499	Repair High Sensitivity UV Scanner 维修高灵敏度 UV 扫描仪 MM60004/HSU	0.20	REPAIR6004/HS
500	Repair Gas Pressure Sensor 维修燃气压力传感器 MM60006, MM60008, MM60011, MM60012, MM60014	0.42	REPAIR6006
501	Repair Air Pressure Sensor 维修空气压力传感器 MM60005, MM60013	0.42	REPAIR6005
502	Repair Oil Pressure Sensor 维修燃油压力传感器 MM60009	0.42	REPAIR6009
503	Repair Outside Temperature Sensor 维修室外温度传感器 MM60007	0.32	REPAIR6007
504	Repair MK6 D.T.I. Module 维修 Mk6 数据传输接口模块 DTI60100, DTI60100/110	4.50	REPAIRDTI
505	Repair Digital I/O Module 维修数字输入输出模块 DTI20020, DTI20020/110	1.00	REPAIRDTI20020
506	Repair Analogue I/O Module 维修模拟输入输出模块 DTI20021, DTI20021/110	1.00	REPAIRDTI20021
507	Repair Universal I/O Module 维修通用输入输出模块 DTI70022	1.00	REPAIRDTI70022
508	Repair Old D.T.I. Module 维修老旧数据传输接口模块 DTI20010, DTI20010/110	3.50	REPAIRDTI20010
509	Repair Signal Convertor 维修信号转换器 SP10020, SP10021	2.50	REPAIR/SIGNAL
510	Repair External Particulate Filter 维修外部微粒过滤器 EGA20103/D	3.50	REPAIR20103
<p>Please note the indicated price is a minimum price quoted and is not the final invoice price. The exact cost can only be established on completion of all repair work. Any units which are deemed to be Beyond Economical Repair will be held in quarantine for a maximum of 6 months. During this time the customer will be informed and may have the unit returned un-repaired or scrapped by Autoflame on their behalf.</p> <p>请注意上述价格为最低价格，并非最终的发票价格。实际费用将根据所有完成的维修工作计算。所有超过经济维修的部件最多保留6个月。在此期间，我们将通知客户，并可能代表客户返还未维修的部件或由 Autoflame 进行报废处理。</p> <p>Any warranty returns to stock will be subject to testing before a decision is made for credit. This may also incur a re-stocking charge.</p> <p>所有保证返还库存的都将进行测试，这可能会招致进货费。</p>			

## Price List Terms and Conditions 价格表条款

All prices indicated are ex-works. 所有价格均是厂价

### Standard Warranty 标准质保期

\*Electronic Equipment and assemblies: 2 years from date of sale

\*Electro-mechanical assemblies and parts: 2 years from date of sale

\*E.G.A. system. Parts, components and sensors: 1 year from date of sale

\*E.G.A. cells: 1 year from date of sale

\*IR Scanner: 1 year from date of sale

\*UV Scanners: 1 year from date of sale

电子设备和组件：销售之日起 2 年内。

机电组件和部件：销售之日起 2 年内。

尾气分析仪系统零件、组件和传感器：销售之日起 1 年内。

尾气分析仪电池：销售之日起 1 年内。

红外扫描仪：销售之日起 1 年内。

紫外线扫描仪：销售之日起 1 年内。

Please note that prices shown may change subject to a 3% currency fluctuation

请注意所有价格因货币波动可能会有 3% 的变化。

A full statement of our business terms and conditions are printed on the reverse of all invoices. A copy can be issued on written request.

在所有发票背面都印有我们的商业条款全文。客户可书面申请获得我公司商业条款文件。

Please do not hesitate to contact Autoflame for price or availability of any specific item that are not listed in this price list.

请随时联系 Autoflame 了解价格表中未列出的特定产品价格或了解是否有货。

AUTOFLAME ENGINEERING LIMITED

Unit 1-2 Concorde Business Centre

Airport Industrial Estate

Wireless Road

Biggin Hill

Kent

TN16 3YN

United Kingdom

[www.autoflame.com](http://www.autoflame.com)

Tel 电话: +44 (0)845 872 2001

Fax 传真: +44(0)845 972 2010

Email 电子邮件: salesinfo@autoflame.com

Autoflame Engineering Ltd  
Autoflame 工程有限公司  
Unit1-2 Concorde Business Centre  
Airport Industrial Estate, Wireless Road  
Biggin Hill, Kent TN16 3YN  
United Kingdom  
+44 (0) 845 872 2000  
[www.autoflame.com](http://www.autoflame.com)

